

APP CRS	Rwy Idg	<b>2801</b>
<b>175°</b>	TDZE	<b>1056</b>
	Apt Elev	<b>1056</b>

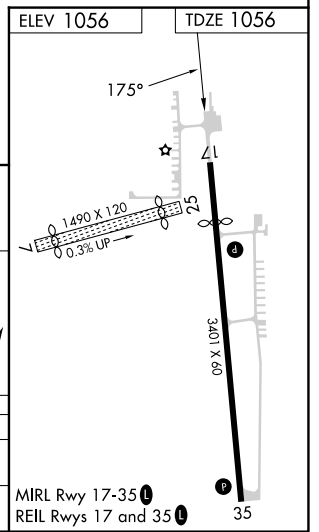
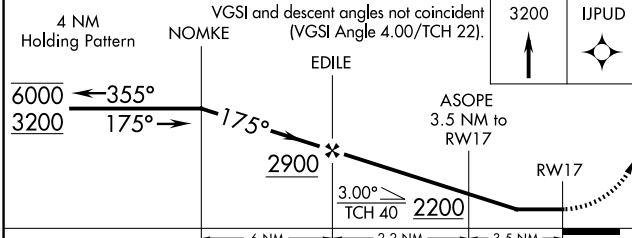
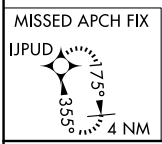
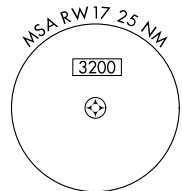
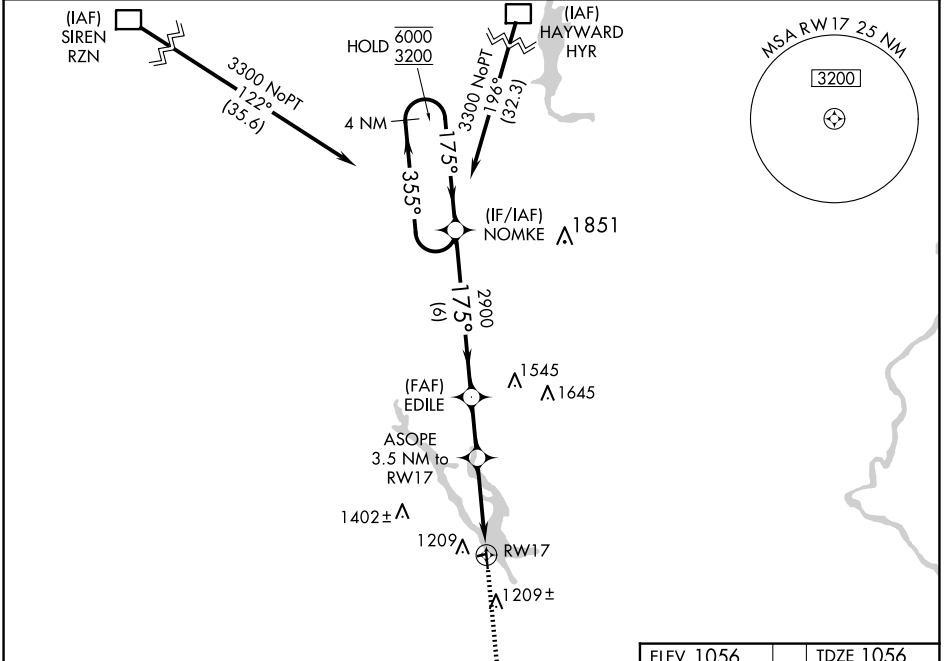
AL- 6935 (FAA)

# RNAV (GPS) RWY 17

CHETEK MUNI/SOUTHWORTH (Y23)

RNP APCH.	Procedure NA at night. Rwy 17 helicopter visibility reduction below 1 SM NA. Circling NA to Rwy 7 and 25.	MISSED APPROACH: Climb to 3200 direct IJPUD and hold.
-----------	---	---

AWOS-3P <b>119.05</b>	MINNEAPOLIS CENTER <b>125.3 335.6</b>	CTAF <b>122.9</b>
--------------------------	--	----------------------



CATEGORY	A	B	C	D
LNVA MDA	1640-1	584 (600-1)	1640-1¾ 584 (600-1¾)	NA
CIRCLING	1640-1	584 (600-1)	1740-2 684 (700-2)	NA

EC-3, 11 JUN 2026 to 09 JUL 2026

EC-3, 11 JUN 2026 to 09 JUL 2026