



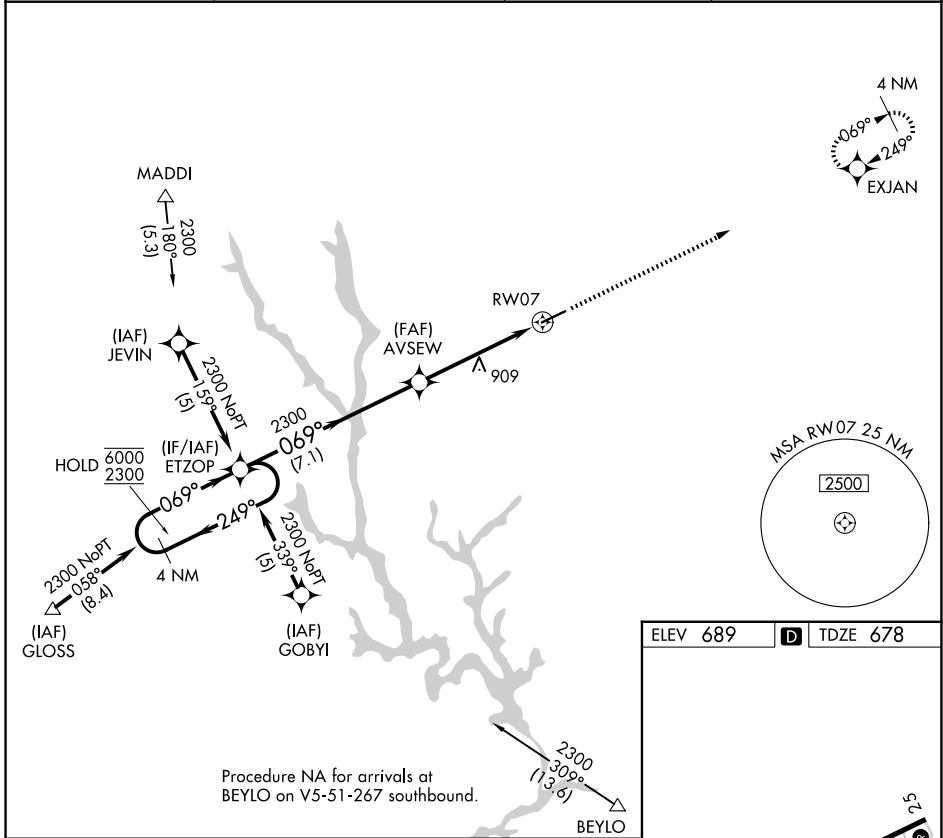
APP CRS	Rwy Ldg	5401
069°	TDZE	678
	Apt Elev	689

RNAV (GPS) RWY 7

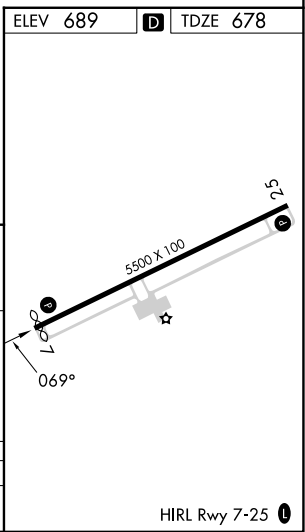
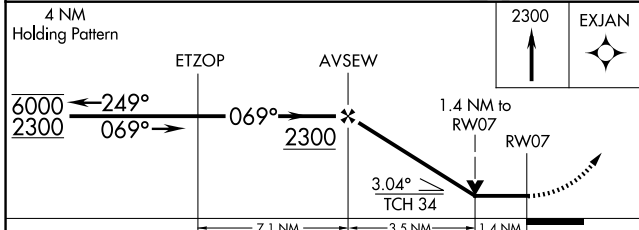
GREENE COUNTY RGNL (CPP)

RNP APCH - GPS.		MISSED APPROACH: Climb to 2300 direct EXJAN and hold.	
  Rwy 7 helicopter visibility reduction below 3/4 SM NA.			

AWOS-3 124.525	ATLANTA APP CON * 132.475 291.1	GCO 121.725	UNICOM 122.8(CTAF)
--------------------------	---	-----------------------	------------------------------



Procedure NA for arrivals at BEYLO on V5-51-267 southbound.



CATEGORY	A	B	C	D
LNAV MDA	1160-1	482 (500-1)	1160-1 3/8	482 (500-1 3/8)

SE-4, 11 JUN 2026 to 09 JUL 2026

SE-4, 11 JUN 2026 to 09 JUL 2026