

APP CRS	Rwy Ldg	2697
320°	TDZE	763
	Apt Elev	763

RNAV (GPS) RWY 32

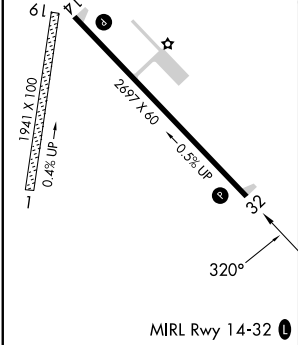
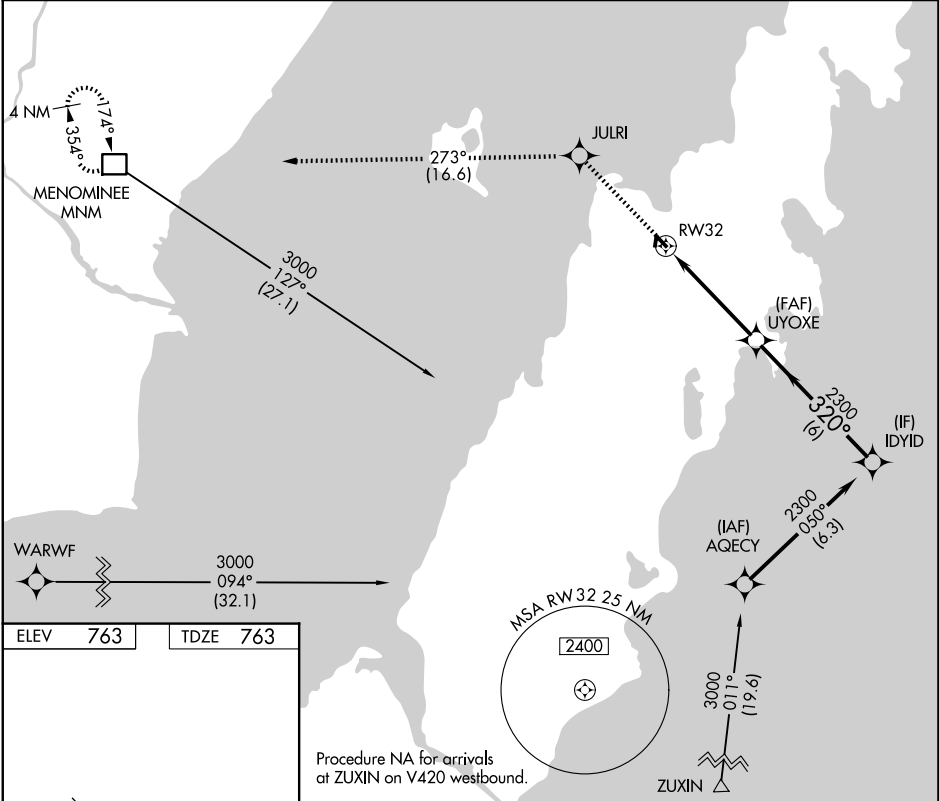
EPHRAIM/GIBRALTAR (3D2)

RNP APCH - GPS.

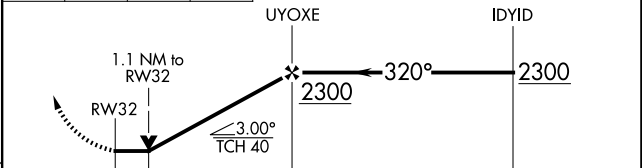
Procedure NA at night. Rwy 32 helicopter visibility reduction below 3/4 SM NA.

MISSED APPROACH: Climb to 3000 direct JULRI and on track 273° to MNM DME and hold.

AWOS-3PT 124.175	GREEN BAY APP CON★ 120.3 338.2	UNICOM 123.0 (CTAF) 0
----------------------------	------------------------------------------	---------------------------------



3000	JULRI	tr 273°	MNM	VGSB and descent angles not coincident (VGSB Angle 3.00/TCH 25).
------	-------	---------	-----	------------------------------------------------------------------



CATEGORY	A	B	C	D
LNAV MDA	1120-1	357 (400-1)		NA

EC-3, 11 JUN 2026 to 09 JUL 2026

EC-3, 11 JUN 2026 to 09 JUL 2026