

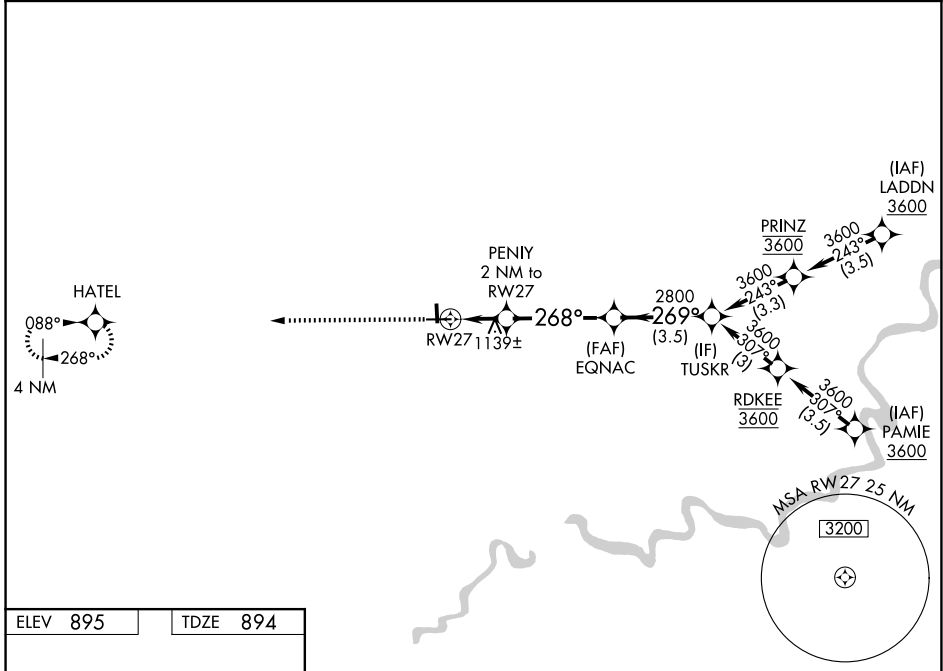
WAAS CH 97604 W27A	APP CRS 268°	Rwy Ldg TDZE Apt Elev	5074 894 895
--	------------------------	-----------------------------	---

RNAV (GPS) RWY 27

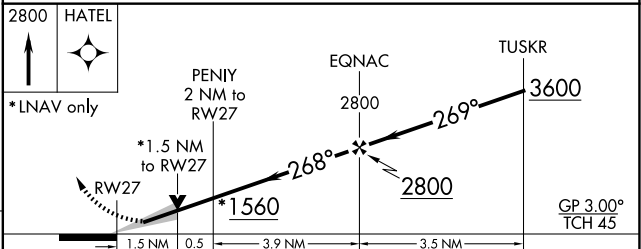
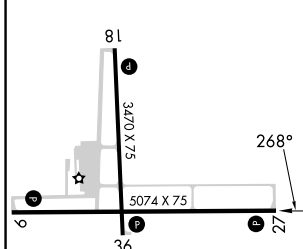
MENOMONIE MUNI/SCORE FLD (LUM)

RNP APCH.	<p>⚠ Circling Rwy 18, 36 NA at night. For uncompensated Baro-VNAV systems, LNAV/VNAV NA below -16°C or above 54°C.</p>	MISSED APPROACH: Climb to 2800 direct HATEL and hold.
-----------	--	---

AWOS-3PT 118.025	MINNEAPOLIS CENTER 125.3 335.6	UNICOM 123.075 (CTAF) 1
----------------------------	--	--



ELEV 895	TDZE 894
----------	----------



CATEGORY	A	B	C	D
LPV DA	1144-3/4	250 (300-3/4)		NA
LNAV/VNAV DA	1470-15/8	576 (600-15/8)		NA
LNAV MDA	1400-1	506 (600-1)	1400-13/8 506 (600-13/8)	NA
CIRCLING	1420-1 525 (600-1)	1800-1 1/4 905 (1000-1 1/4)	1820-2 3/4 925 (1000-2 3/4)	NA

REIL Rwy 9 and 27 **1**
MIRL Rwy 9-27 and 18-36 **1**
MENOMONIE, WISCONSIN
Amdt 1 20JUN19

MENOMONIE MUNI/SCORE FLD (LUM)
RNAV (GPS) RWY 27

44°54'N-91°52'W

EC-3, 11 JUN 2026 to 09 JUL 2026

EC-3, 11 JUN 2026 to 09 JUL 2026