

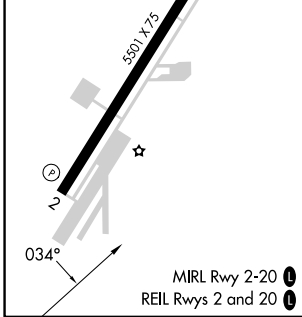
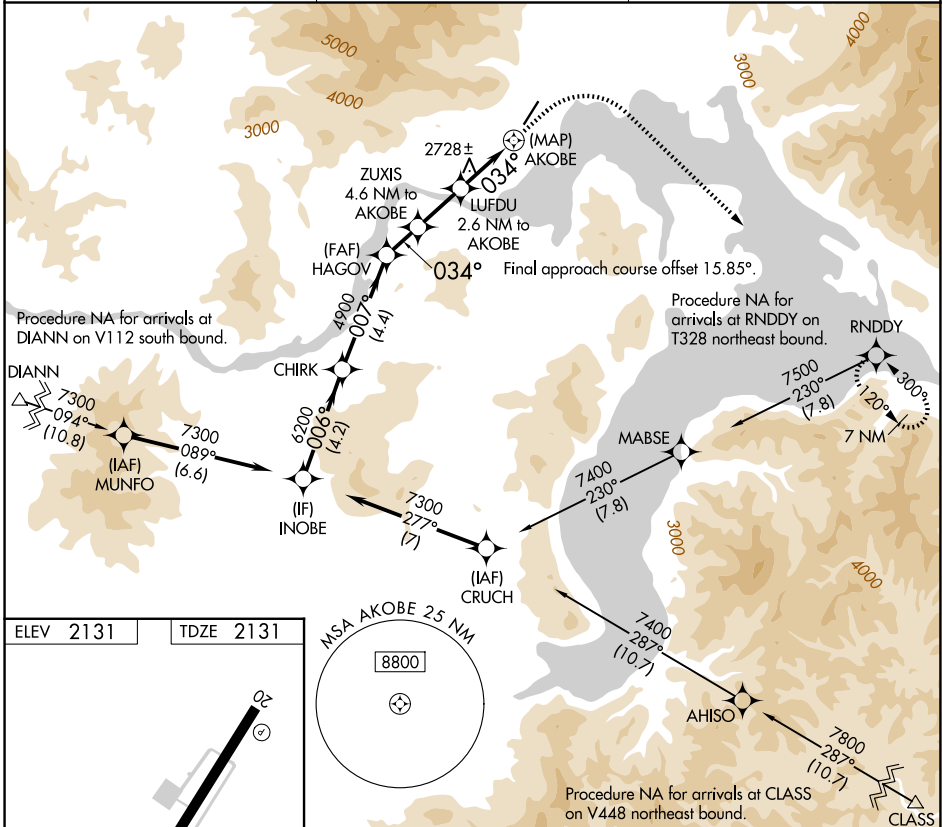
WAAS CH 63146 W02A	APP CRS 034°	Rwy Ldg TDZE Apt Elev	5501 2131 2131
--	------------------------	-----------------------------	---

RNAV (GPS) Z RWY 2

SANDPOINT (SZT)

RNP APCH - GPS.	MISSED APPROACH: Climb to 3900 then climbing right turn to 9000 direct RNDY and hold, continue climb-in-hold to 9000. *Missed approach requires minimum climb of 350 feet per NM to 6500; If unable to meet climb gradient, see RNAV (GPS)-B.
<p>Rwy 2 helicopter visibility reduction below 1 SM NA. Procedure NA at night.</p> <p>-16°C</p>	

AWOS-2 135.425	SEATTLE CENTER 123.95 290.55	UNICOM 122.7 (CTAF) 0
--------------------------	--	---------------------------------



MSA AKOBE 25 NM
8800

VGSI and descent angles not coincident (VGSI Angle 3.75/TCH 28).

INOBE	CHIRK	HAGOV	ZUXIS	LUFDU	AKOBE	RNDY
7300	6200	4900	4300	3480		
4.2 NM	4.4 NM	1.5 NM	2.1 NM	2.6 NM	0.7	
006°	007°	034°	3.75°			
TCH 50		4.6 NM to AKOBE		2.6 NM to AKOBE		
CATEGORY		A	B	C	D	
LP MDA*		3100-1¼ 969 (1000-1¼)	3100-1½ 969 (1000-1½)	3100-3 969 (1000-3)		NA