

APP CRS	Rwy Ldg	<b>4404</b>
<b>352°</b>	TDZE	<b>3454</b>
	Apt Elev	<b>3454</b>

# RNAV (GPS) RWY 35

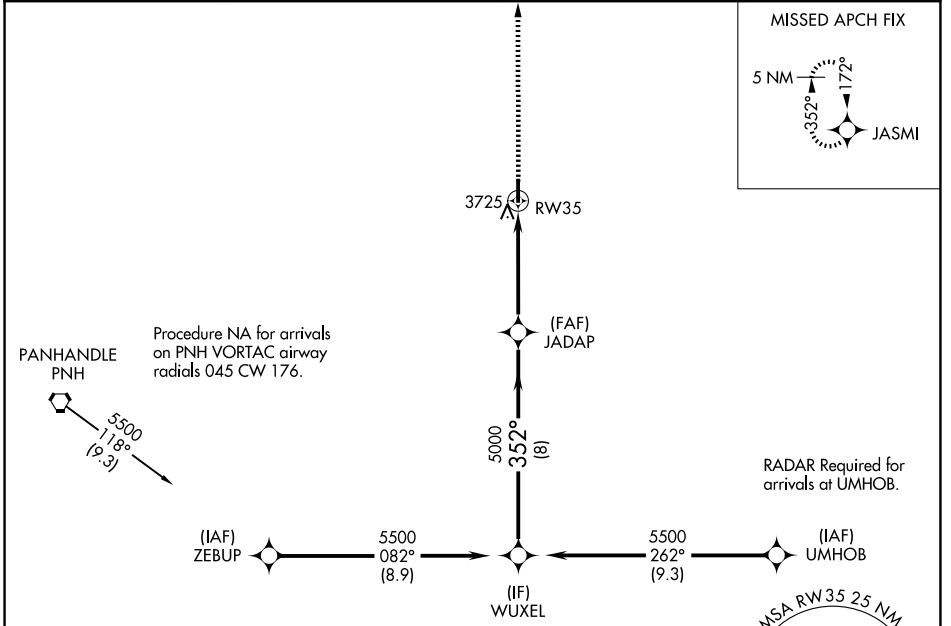
PANHANDLE-CARSON COUNTY (T45)

RNP APCH - GPS.

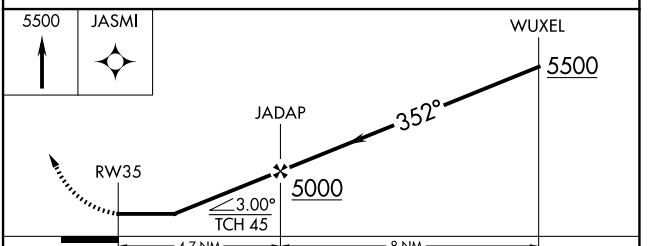
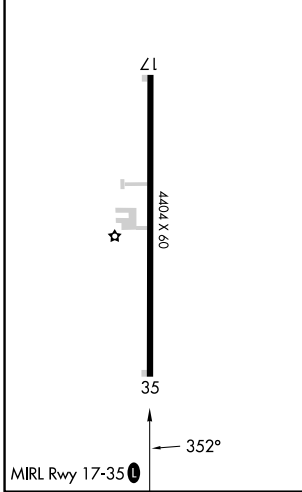
**⚠** Use Rick Husband Amarillo Intl altimeter setting; when not received, use Hutchinson County altimeter setting and increase all MDA 40 feet; increase RNAV Cat C visibility to 2. Rwy 35 helicopter visibility reduction below ¾ SM NA.

MISSED APPROACH: Climb to 5500 direct JASMI and hold.

AMA ASOS <b>118.85 350.3</b>	AMARILLO APP CON ★ <b>119.5 307.0</b>	UNICOM <b>122.7 (CTAF)</b>	<b>123.5</b>
---------------------------------	--	-------------------------------	--------------



ELEV	<b>3454</b>	TDZE	<b>3454</b>
------	-------------	------	-------------



CATEGORY	A	B	C	D
LNAV MDA	4100-1	646 (700-1)	4100-1 7/8 646 (700-1 7/8)	NA
CIRCLING	4140-1	686 (700-1)	4140-2 686 (700-2)	NA

SC-2, 11 JUN 2026 to 09 JUL 2026

SC-2, 11 JUN 2026 to 09 JUL 2026