

WAAS CH 90437 W32A	APP CRS 317°	Rwy Ldg TDZE Apt Elev	5006 1162 1162
--	------------------------	-----------------------------	---

RNAV (GPS) RWY 32

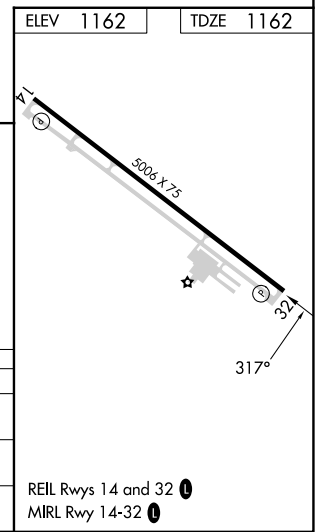
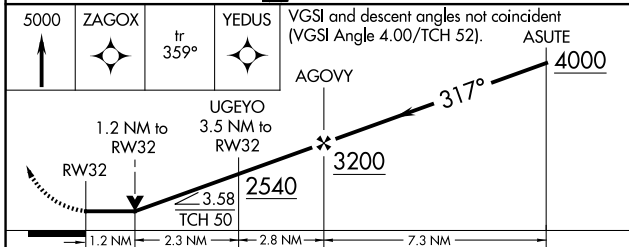
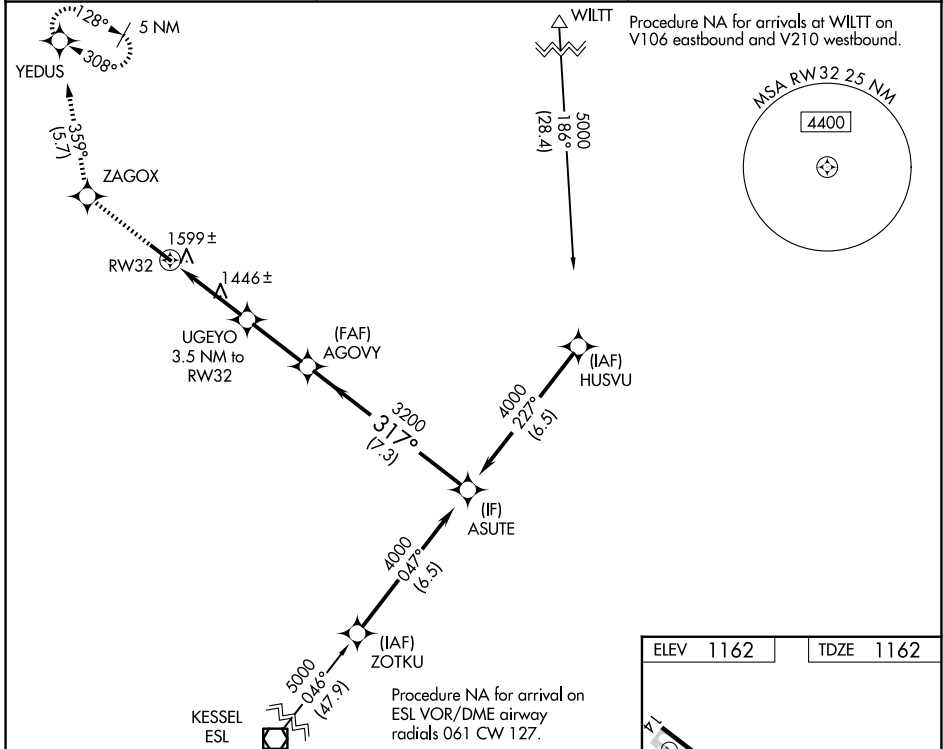
BEDFORD COUNTY (HMZ)

RNP APCH - GPS.

▼ Rwy 32 helicopter visibility reduction below 3/4 SM NA. VDP NA when using Altoona altimeter setting. When local altimeter setting not received, use Altoona altimeter setting and increase all MDA 100 feet, increase LP Cat C visibility 1/4 SM, increase LNAV Cat B visibility 1/4 SM and Cat C visibility 1/2 SM, and increase Circling Cats A and B visibility 1/4 SM.

▲ MISSED APPROACH: Climb to 5000 direct ZAGOX and on track 359° to YEDUS and hold, continue climb-in-hold to 5000.

AWOS-3 123.675	JOHNSTOWN APP CON ★ 121.2 299.2	UNICOM 122.7 (CTAF) 0
--------------------------	---	---------------------------------



CATEGORY	A	B	C	D
LP MDA	1740-1	578 (600-1)	1740-1½ 578 (600-1½)	NA
LNAV MDA	1860-1	698 (700-1)	1860-2 698 (700-2)	NA
CIRCLING	1900-1 738 (800-1)	1960-1 798 (800-1)	2200-3 1038 (1100-3)	NA

NE-4, 11 JUN 2026 to 09 JUL 2026

NE-4, 11 JUN 2026 to 09 JUL 2026