

WAAS CH <b>70512</b> <b>W36A</b>	APP CRS <b>357°</b>	Rwy Ldg TDZE Apt Elev	<b>5500</b> <b>891</b> <b>910</b>
--	------------------------	-----------------------------	---

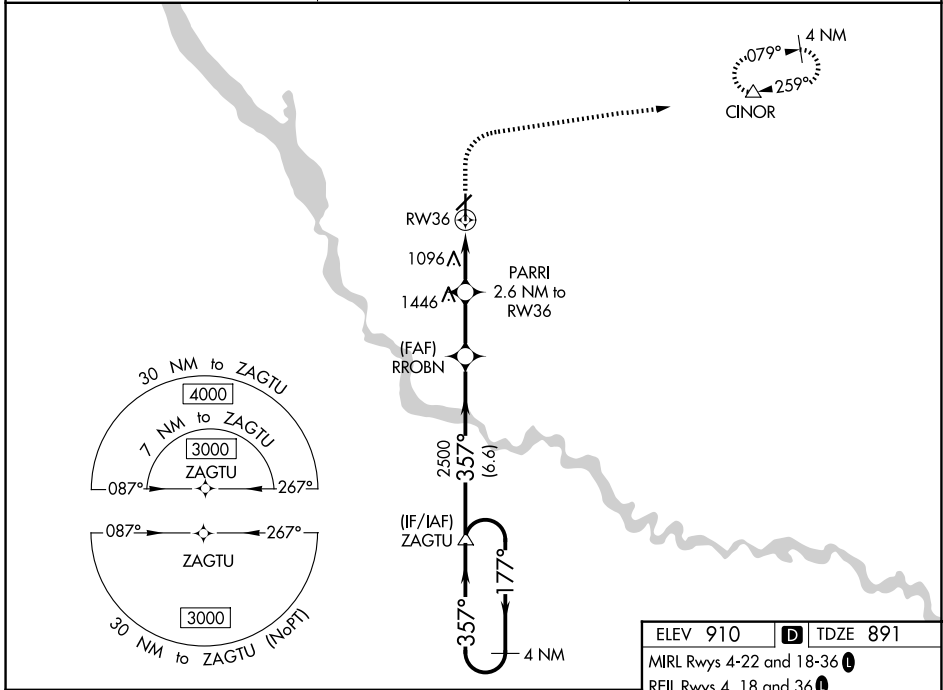
# RNAV (GPS) RWY 36

ANKENY RGNL (IKV)

**▽** For uncompensated Baro-VNAV systems, LNAV/VNAV NA below -20°C (-4°F) or above 54°C (130°F). Circling Rwy 22 NA at night. DME/DME RNP-0.3 NA.

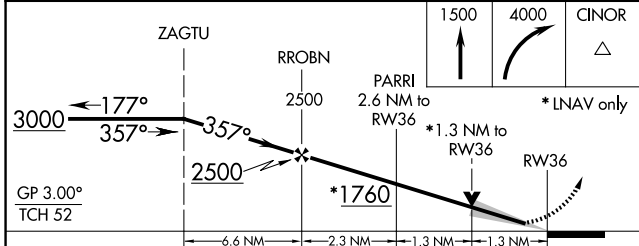
**MISSED APPROACH:** Climb to 1500 then climbing right turn to 4000 direct CINOR and hold, continue climb-in-hold to 4000.

AWOS-3 <b>119.175</b>	DES MOINES APP CON <b>123.9 307.15</b>	UNICOM <b>122.9 (CTAF)</b>
--------------------------	---	-------------------------------

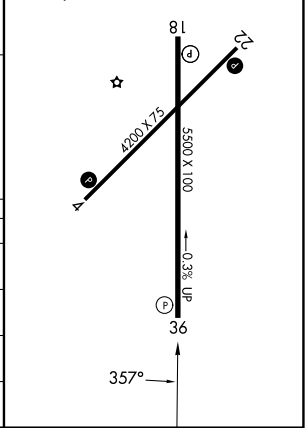


NC-3, 11 JUN 2026 to 09 JUL 2026

NC-3, 11 JUN 2026 to 09 JUL 2026



ELEV 910	<b>D</b>	TDZE 891
MRL Rwy 4-22 and 18-36 <b>Ⓛ</b>		
REIL Rwy 4, 18 and 36 <b>Ⓛ</b>		
REIL Rwy 22		



CATEGORY	A	B	C	D
LPV DA		1091-3/4	200 (200-3/4)	
LNAV/VNAV DA		1405-13/4	514 (500-13/4)	
LNAV MDA	1360-1	469 (500-1)	1360-13/8	469 (500-13/8)
CIRCLING	1560-1	650 (700-1)	1560-13/4 650 (700-13/4)	1760-23/4 850 (900-23/4)