

TEXOMA FIVE DEPARTURE

GRAND PRAIRIE, TEXAS

LONE STAR DEP CON
 135.975 379.9
 GND CON
 121.15
 GRAND PRAIRIE TOWER★
 128.55 (CTAF)

**TOP ALTITUDE:
 ASSIGNED BY ATC**

TULSA
 114.4 TUL
 Chan 91

RADAR and DME required.

WILL ROGERS
 114.1 IRW
 Chan 88

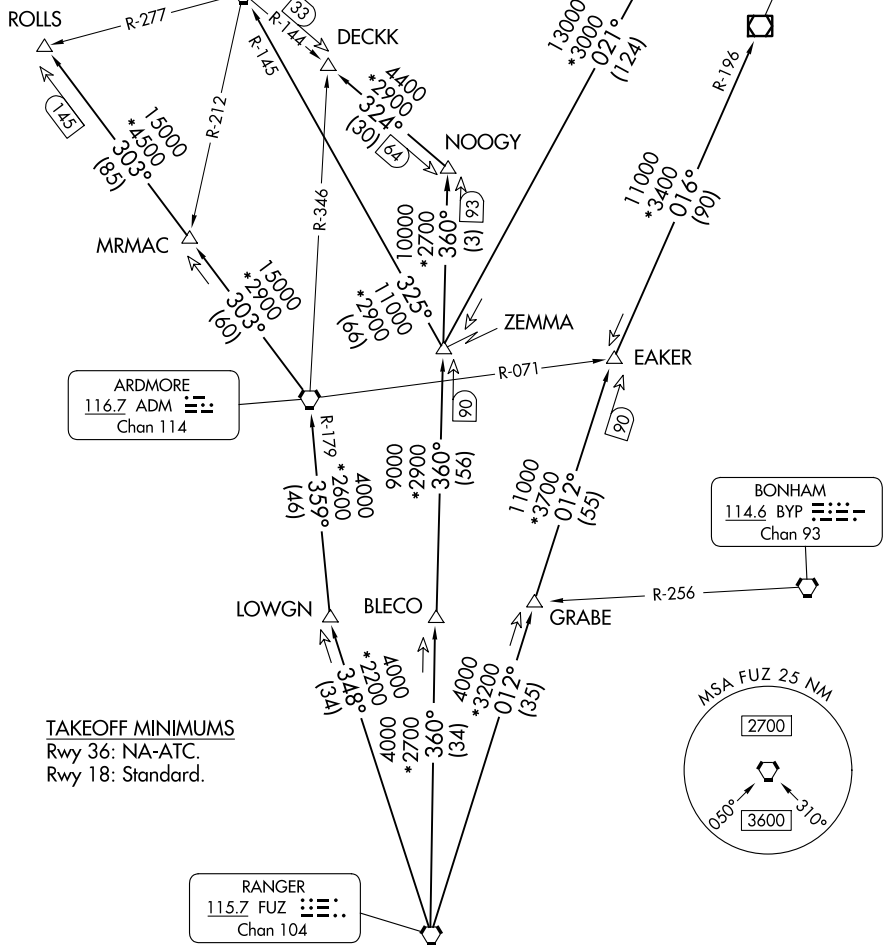
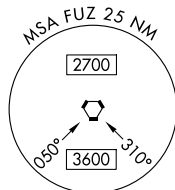
OKMULGEE
 114.9 OKM
 Chan 96

ARDMORE
 116.7 ADM
 Chan 114

BONHAM
 114.6 BYP
 Chan 93

RANGER
 115.7 FUZ
 Chan 104

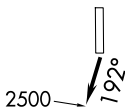
TAKEOFF MINIMUMS
 Rwy 36: NA-ATC.
 Rwy 18: Standard.



SC-2, 11 JUN 2026 to 09 JUL 2026

SC-2, 11 JUN 2026 to 09 JUL 2026

(CONTINUED ON FOLLOWING PAGE)



NOTE: Chart not to scale.

TEXOMA FIVE DEPARTURE