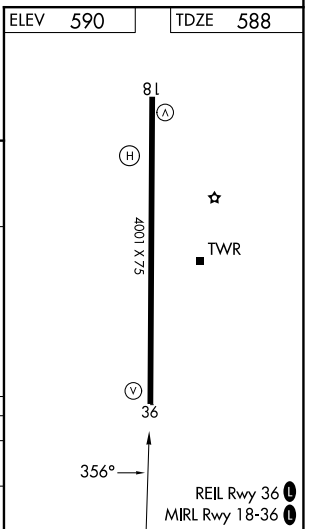
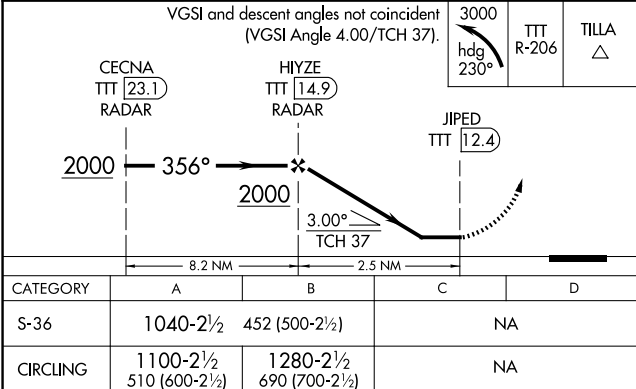
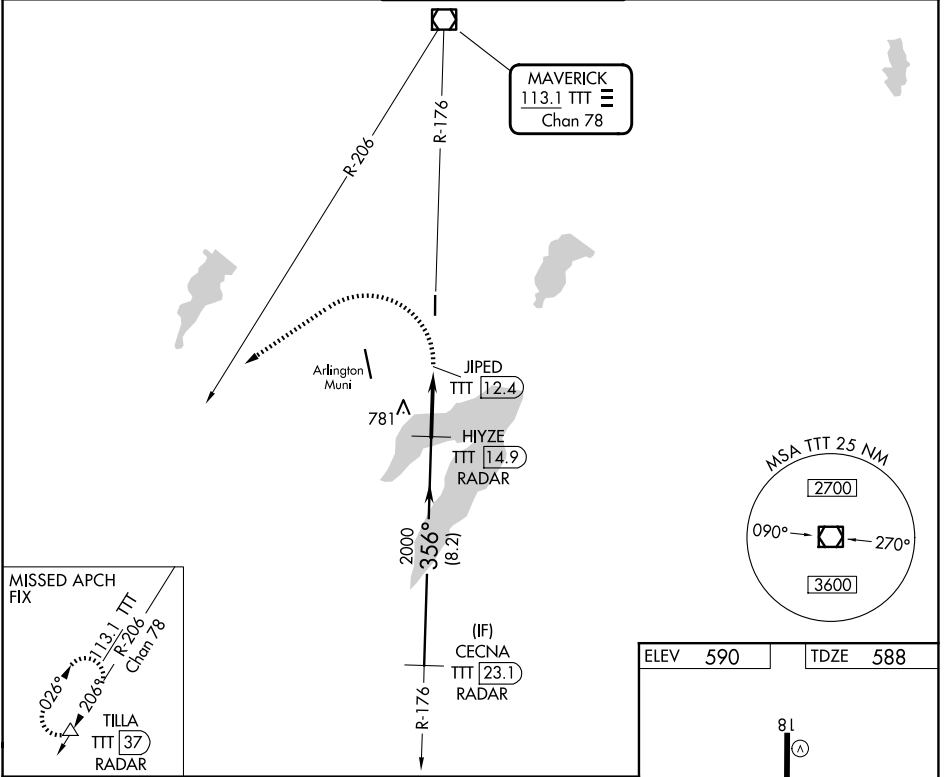


VOR/DME TTT 113.1 Chan 78	APP CRS 356°	Rwy Ldg TDZE 588 Apt Elev 590	4001
---	------------------------	---	-------------

VOR RWY 36

GRAND PRAIRIE MUNI (GPM)

RADAR and DME required.		MISSED APPROACH: Climbing left turn to 3000 on heading 230° and TTT VOR/DME R-206 to TILLA/37 DME/RADAR and hold.		
Circling Rwy 18 NA at night.		GRAND PRAIRIE TOWER ★ 128.55 (CTAF)	GND CON 121.15	UNICOM 123.075



SC-2, 11 JUN 2026 to 09 JUL 2026

SC-2, 11 JUN 2026 to 09 JUL 2026