

LOC/DME I-JFZ <b>109.75</b> Chan 34 (Y)	APP CRS <b>252°</b>	Rwy Ldg TDZE Apt Elev	<b>4299</b> <b>2653</b> <b>2653</b>
---	------------------------	-----------------------------	---

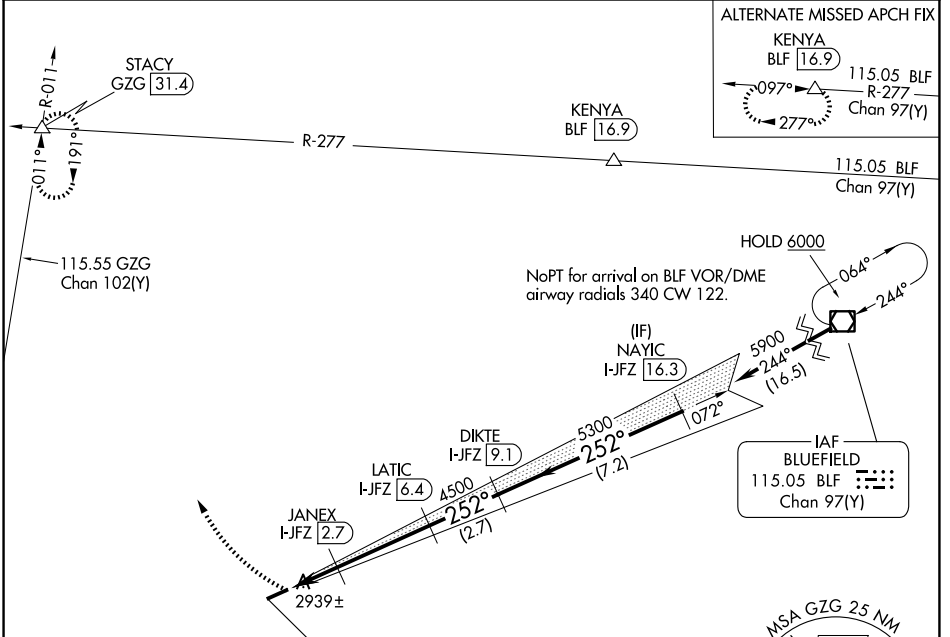
# LOC/DME RWY 25

TAZEWELL COUNTY (JF'Z)

**⚠** Visibility reduction by helicopters NA. When local altimeter setting not received use Wise altimeter setting and increase all MDA 100 feet, increase S-25 Cat C visibility 1/4 mile and Circling Cat C visibility 3/8 mile. When VGSI inop, Straight-in/Circling Rwy 25 NA at night. When VGSI inop, Circling Rwy 7 NA at night. Circling NA for Cat C south of Rwy 7-25.

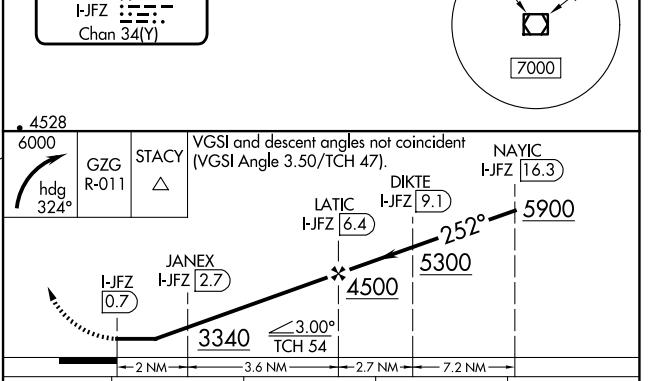
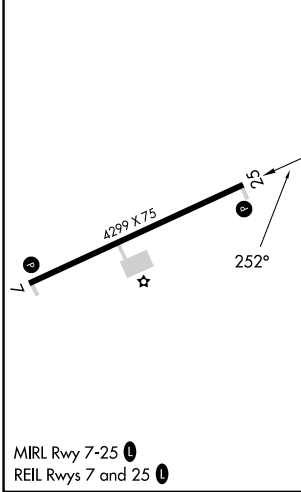
**MISSED APPROACH:** Climbing right turn to 6000 on heading 324° and GZG R-011 to STACY INT/GZG 31.4 DME and hold.

AWOS-3 <b>118.075</b>	ATLANTA CENTER <b>127.85 269.3</b>	GCO <b>135.075</b>	UNICOM <b>123.05 (CTAF) 0</b>
--------------------------	---------------------------------------	-----------------------	----------------------------------



ELEV 2653	TDZE 2653
-----------	-----------

**LOCALIZER 109.75**  
I-JFZ [Morse Code]  
Chan 34(Y)



CATEGORY	A	B	C	D
S-25	3200-1	547 (600-1)	3200-1 1/2 547 (600-1 1/2)	NA
CIRCLING	3240-1	587 (600-1)	3240-1 1/2 587 (600-1 1/2)	NA

NE-3, 11 JUN 2026 to 09 JUL 2026

NE-3, 11 JUN 2026 to 09 JUL 2026