

WAAS CH 86329 W33A	APP CRS 329°	Rwy Idg TDZE 345 Apt Elev 345	2997 345 345
--	------------------------	---	---

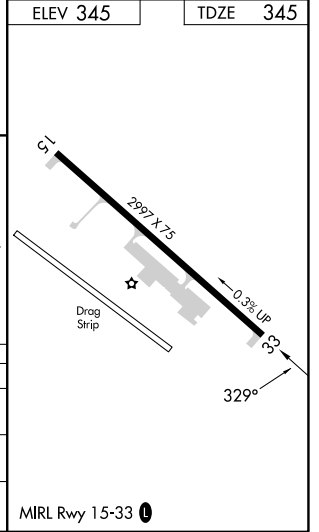
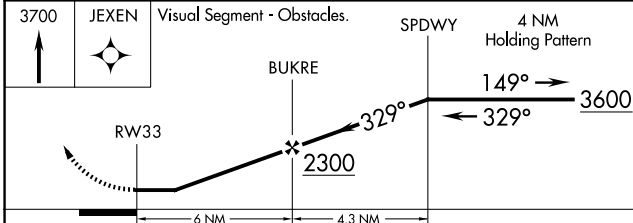
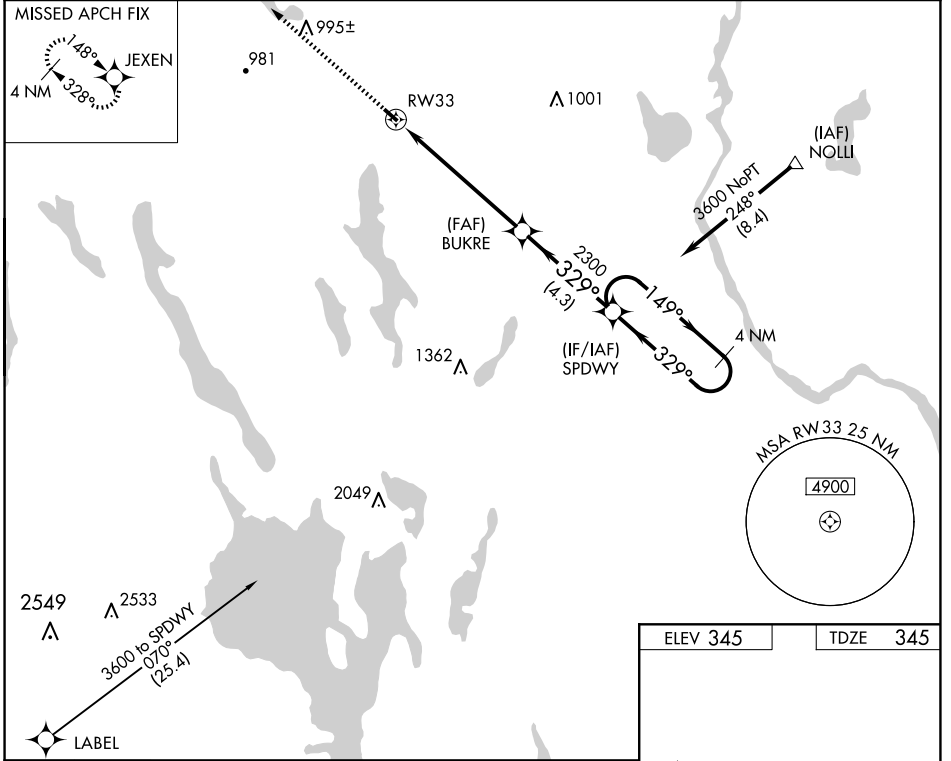
RNAV (GPS) RWY 33

OXFORD COUNTY RGNL (81B)

NA DME/DME RNP-0.3 NA. Procedure NA at night. Use Auburn/Lewiston altimeter setting; when not received, use Fryeburg altimeter setting and increase all MDAs 40 feet. Helicopter visibility reduction below 1 SM NA.

MISSED APPROACH: Climb to 3700 direct JEXEN and hold, continue climb-in-hold to 3700.

LEW AWOS-3 118.025	PORTLAND APP CON ★ 125.5 353.9	UNICOM 122.8 (CTAF) 0
------------------------------	--	---------------------------------



CATEGORY	A	B	C	D
LP MDA	1120-1 775 (800-1)	1120-1¼ 775 (800-1¼)		NA
LNVA MDA	1140-1 795 (800-1)	1140-1¼ 795 (800-1¼)		NA
CIRCLING	1220-1¼ 875 (900-1¼)	1400-1½ 1055 (1100-1½)		NA

NE-1, 11 JUN 2026 to 09 JUL 2026

NE-1, 11 JUN 2026 to 09 JUL 2026