

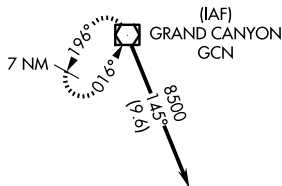
APP CRS 188°	Rwy Ldg TDZE Apt Elev	4199 5996 5999
------------------------	-----------------------------	---

RNAV (GPS) RWY 19

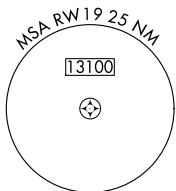
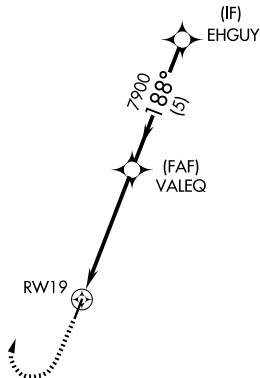
VALLE (40G)

RNP APCH.
 Procedure NA at night. Rwy 19 helicopter visibility reduction below 1 SM NA. Use Grand Canyon NH Park altimeter setting; when not received, procedure NA.
 MISSED APPROACH: Climb to 7000 then climbing right turn to 10000 direct GCN VOR/DME and hold.

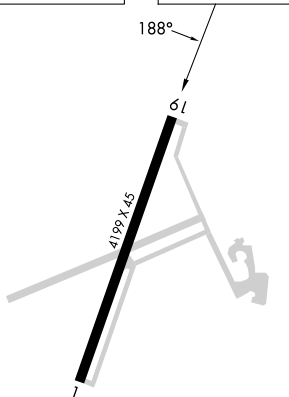
GCN ASOS 124.3	LOS ANGELES CENTER 124.85 319.2	UNICOM 122.8 (CTAF)
--------------------------	---	-------------------------------



Procedure NA for arrival on GCN VOR/DME airway radials 062 CW 080.



ELEV 5999	TDZE 5996
-----------	-----------



	7000	10000	GCN	
	↑	↷	◻	
	RWY 19		VALEQ	EHGUY
	7900		188°	8500
	≤ 3.50° TCH 50			
	5 NM		5 NM	
CATEGORY	A	B	C	D
RNAV MDA	6560-1	564 (600-1)	6560-1 ⁵ / ₈ 564 (600-1 ⁵ / ₈)	NA
CIRCLING	6620-1 621 (700-1)	6640-1 641 (700-1)	6640-1 ³ / ₄ 641 (700-1 ³ / ₄)	NA

SW-4, 11 JUN 2026 to 09 JUL 2026

SW-4, 11 JUN 2026 to 09 JUL 2026