

WAAS CH <b>70529</b> <b>W29A</b>	APP CRS <b>286°</b>	Rwy Ldg TDZE Apt Elev	<b>4001</b> <b>1277</b> <b>1277</b>
--	------------------------	--------------------------	---

# RNAV (GPS) RWY 29

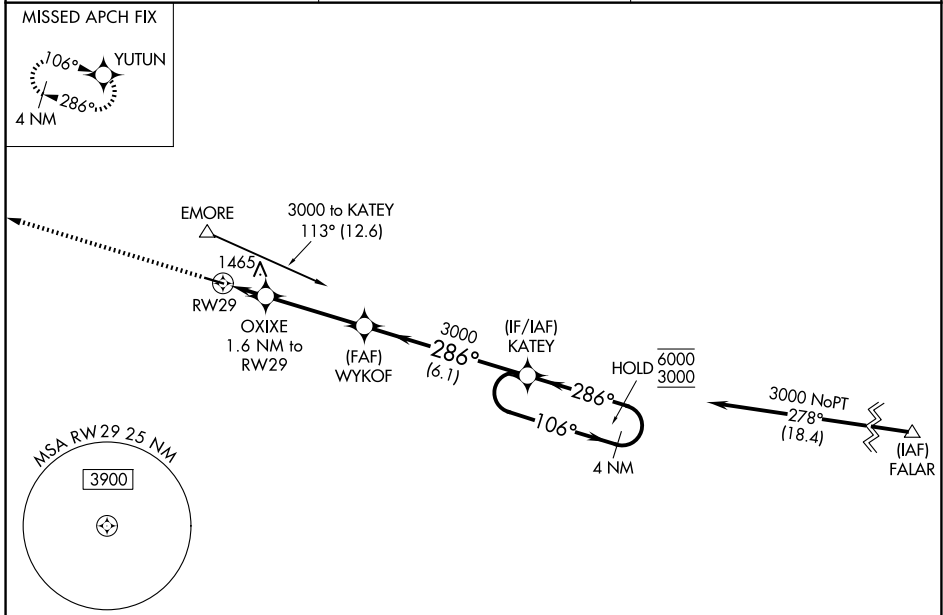
FILLMORE COUNTY (FKA)

RNP APCH-GPS.

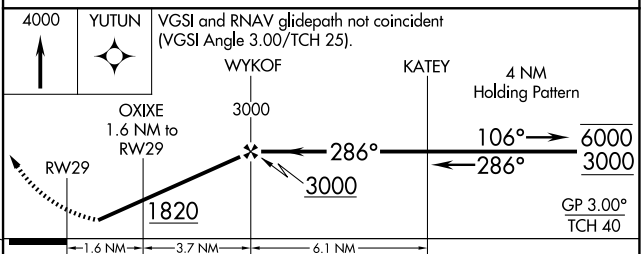
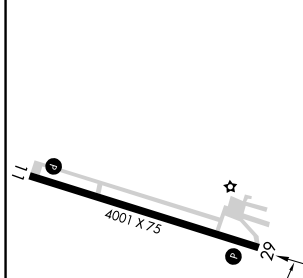
**▼** Rwy 29 helicopter visibility reduction below  $\frac{3}{4}$  SM NA.  
**▲** For uncompensated Baro-VNAV systems, LNAV/VNAV NA below  $-17^{\circ}\text{C}$  or above  $54^{\circ}\text{C}$ .

MISSED APPROACH: Climb to 4000 direct YUTUN and hold.

AWOS-3PT <b>118.55</b>	ROCHESTER APP CON* <b>119.8 251.125</b>	CTAF <b>122.9 0</b>
---------------------------	--	------------------------



ELEV 1277	TDZE 1277
-----------	-----------



CATEGORY	A	B	C	D
LPV DA	1527-1 250 (300-1)			NA
LNAV/VNAV DA	1550-1 273 (300-1)			NA
LNAV MDA	1780-1	503 (600-1)	1780-1 $\frac{3}{8}$ 503 (600-1 $\frac{3}{8}$ )	NA
CIRCLING	1780-1 503 (600-1)	1900-1 623 (700-1)	1900-1 $\frac{3}{4}$ 623 (700-1 $\frac{3}{4}$ )	NA

REIL Rwy 11 and 29 **0**  
MIRL Rwy 11-29 **0**

NC-1, 11 JUN 2026 to 09 JUL 2026

NC-1, 11 JUN 2026 to 09 JUL 2026