

APP CRS 274°	Rwy Ldg TDZE Apt Elev	3499 969 969
------------------------	-----------------------------	---

RNAV (GPS) RWY 28

LAKEVIEW/GRIFFITH FLD (13C)

RNP APCH - GPS.

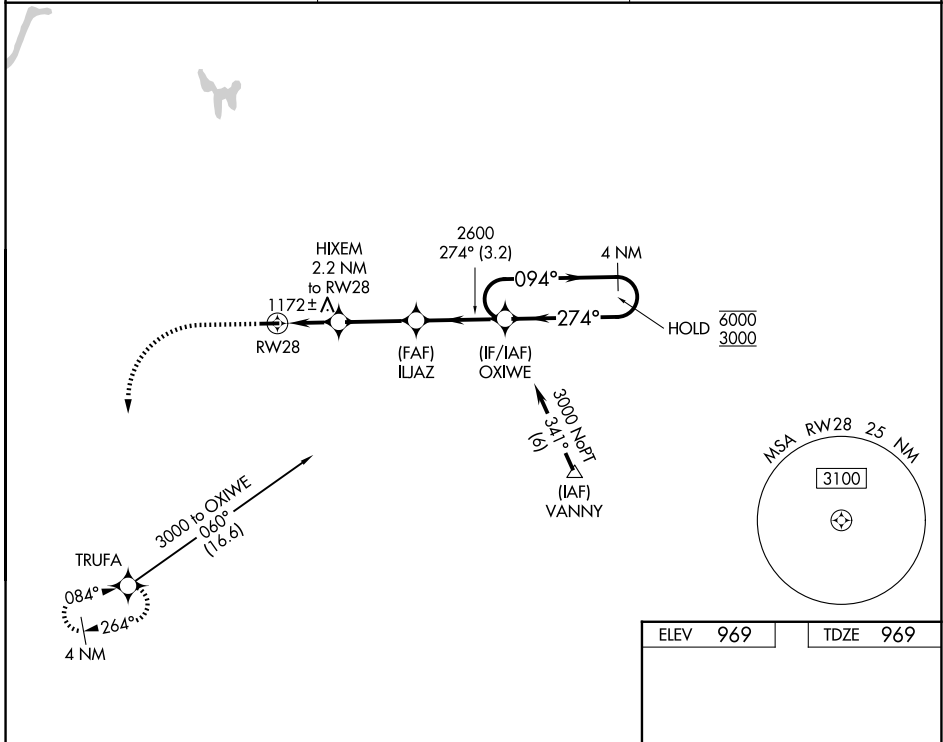
⚠ Procedure NA at night. Use Big Rapids altimeter setting; when not received, use Mount Pleasant altimeter setting and increase all MDAs 60 feet. Rwy 28 helicopter visibility reduction below 1 SM NA.

MISSED APPROACH: Climb to 1800 then climbing left turn to 3000 direct TRUFA and hold.

RQB AWOS-3P
125.875

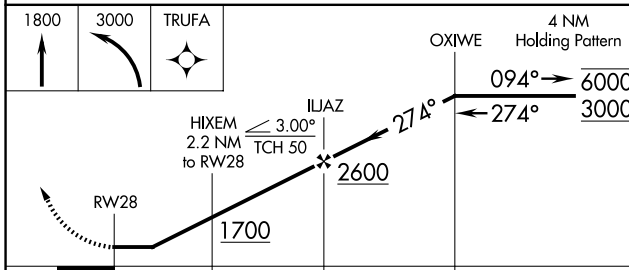
GREAT LAKES APP CON *
124.6 257.6

UNICOM
122.8 (CTAF) 0



EC-1, 11 JUN 2026 to 09 JUL 2026

EC-1, 11 JUN 2026 to 09 JUL 2026



ELEV	969	TDZE	969
------	-----	------	-----

CATEGORY	A	B	C	D
INAV MDA	1480-1	511 (600-1)	NA	
CIRCLING	1480-1 511 (600-1)	1580-1 611 (700-1)	NA	

