

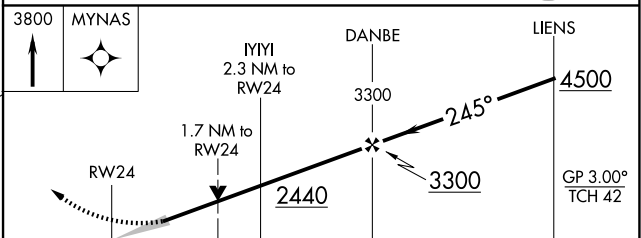
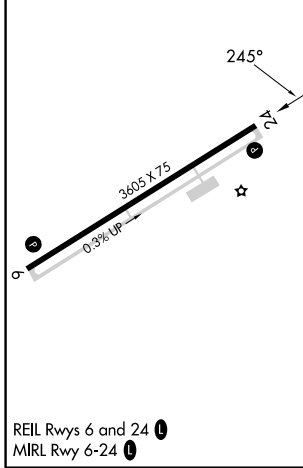
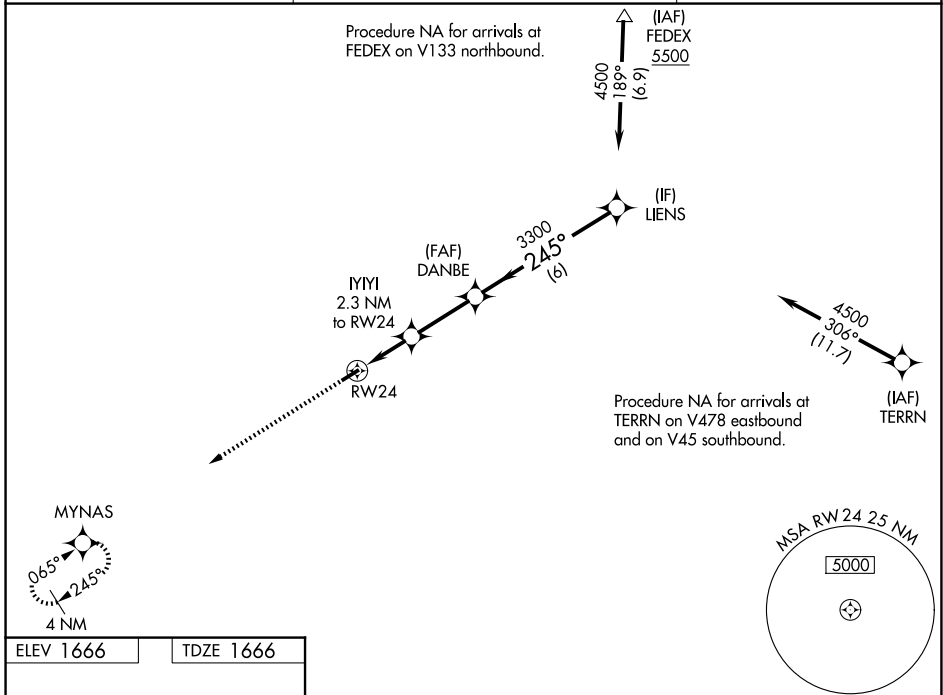
WAAS CH 70431 W24A	APP CRS 245°	Rwy Ldg TDZE 3605 1666	Apt Elev 1666
--	------------------------	--	-------------------------

RNAV (GPS) RWY 24

LOGAN COUNTY (6L4)

RNP APCH - GPS.		MISSED APPROACH: Climb to 3800 direct MYNAS and hold.
<p>⚠ For uncompensated Baro-VNAV systems, LNAV/VNAV NA below -18°C or above 54°C.</p>		

AWOS-3PT 119.375	CHARLESTON APP CON 119.2 269.125	CTAF 122.9
----------------------------	--	-------------------



CATEGORY	A	B	C	D
LPV DA	1916- ³ / ₄		250 (300- ³ / ₄)	NA
LNAV/VNAV DA	2240-1 ⁵ / ₈		574 (600-1 ⁵ / ₈)	NA
LNAV MDA	2240-1	574 (600-1)	2240-1 ⁵ / ₈ 574 (600-1 ⁵ / ₈)	NA
CIRCLING	2360-1 694 (700-1)	2440-1 774 (800-1)	2720-3 1054 (1100-3)	NA

NE-4, 11 JUN 2026 to 09 JUL 2026

NE-4, 11 JUN 2026 to 09 JUL 2026