

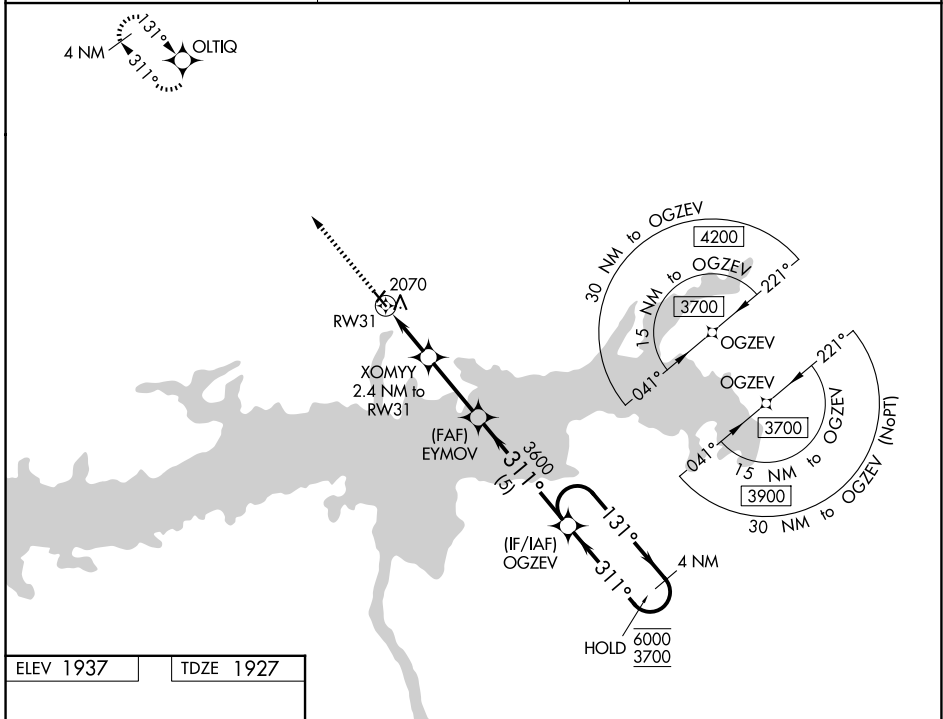
WAAS CH <b>97740</b> W <b>31A</b>	APP CRS <b>311°</b>	Rwy Ldg TDZE <b>1927</b> Apt Elev <b>1937</b>
---	------------------------	---

# RNAV (GPS) RWY 31

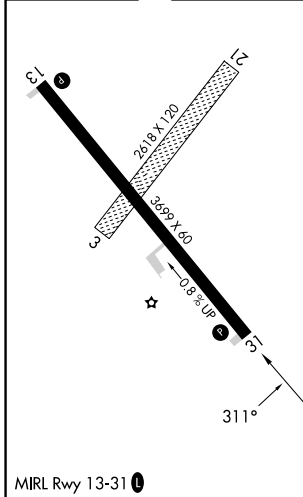
GARRISON MUNI (D05)

RNP APCH	MISSED APPROACH: Climb to 3900 direct OLTIQ and hold.
<p>▼ Circling NA to Rws 3 and 21. Baro-VNAV NA.</p> <p>▲ NA Use Minot Intl altimeter setting.</p>	

MOT ASOS <b>118.725</b>	MINNEAPOLIS CENTER <b>127.6 279.6</b>	CTAF <b>122.9</b>
----------------------------	--	----------------------



ELEV 1937	TDZE 1927
-----------	-----------



3900 OLTIQ VGSi and RNAV glidepath not coincident (VGSi Angle 3.00/TCH 29).

\* LNAV only

EYMOV 3600 OGZEV 4 NM Holding Pattern

XOMYY 2.4 NM to RW31

RW31 2.4 NM 2.8 NM 5 NM

2700\* 3600 131° → 6000 ← 311° 3700

GP 3.00° TCH 40

CATEGORY	A	B	C	D
LPV DA	2250-1	323 (400-1)		NA
LNAV/VNAV DA	2335-1¼	408 (400-1¼)		NA
LNAV MDA	2460-1	533 (600-1)		NA
CIRCLING	2640-1	2720-1		NA
	703 (800-1)	783 (800-1)		

NC-1, 11 JUN 2026 to 09 JUL 2026

NC-1, 11 JUN 2026 to 09 JUL 2026