

APP CRS	Rwy Ldg	<b>5100</b>
<b>242°</b>	TDZE	<b>3411</b>
	Apt Elev	<b>3426</b>

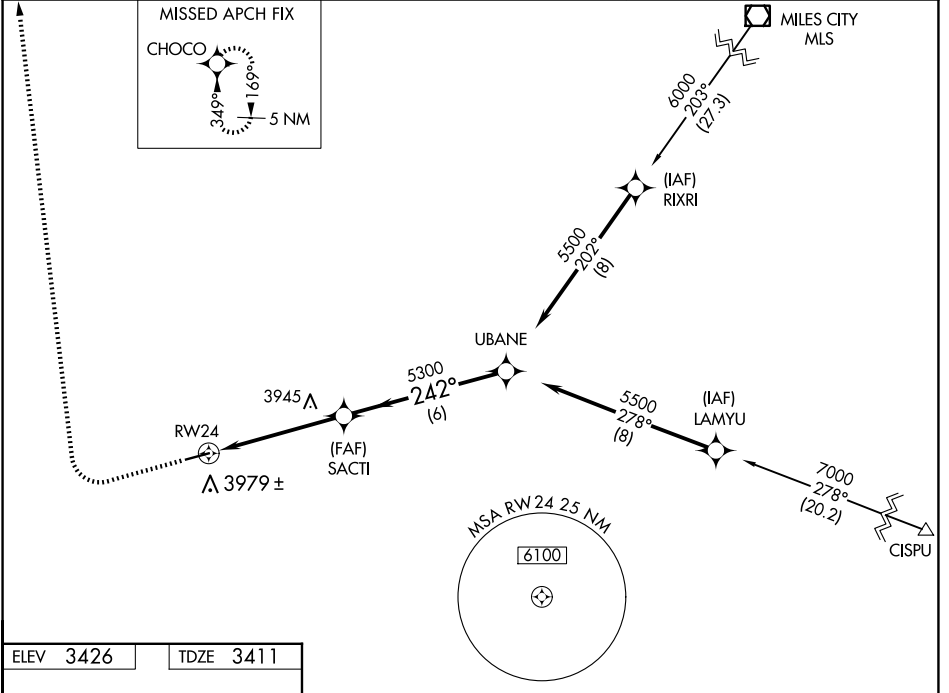
# GPS RWY 24

COLSTRIP (M46)

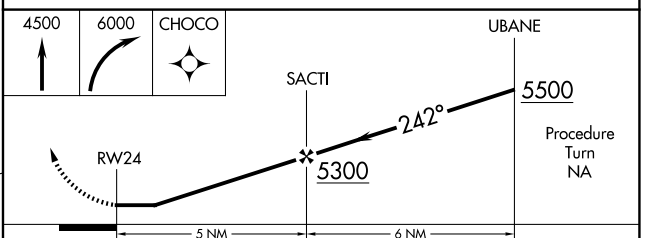
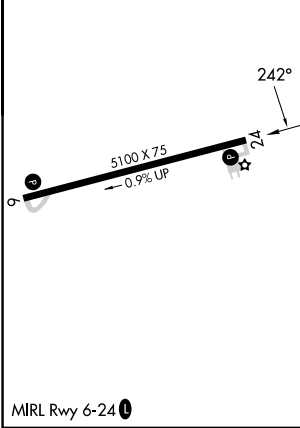
**NA** When local altimeter not received use Miles City altimeter setting. Helicopter visibility reduction below 3/4 SM NA.

**MISSED APPROACH:** Climb to 4500 then climbing right turn to 6000 direct CHOCO WP and hold.

AWOS-3PT <b>118.525</b>	SALT LAKE CENTER <b>126.85 305.2</b>	UNICOM <b>122.7 (CTAF)</b>
----------------------------	---	-------------------------------



ELEV 3426	TDZE 3411
-----------	-----------



CATEGORY	A	B	C	D
S-24	4200-1 789 (800-1)	4200-1¼ 789 (800-1¼)	4200-2¼ 789 (800-2¼)	NA
CIRCLING	4340-1¼	914 (1000-1¼)	4340-2¾ 914 (1000-2¾)	NA
MILES CITY ALTIMETER SETTING				
S-24	4440-1¼ 1029 (1100-1¼)	4440-1½ 1029 (1100-1½)	4440-2¾ 1029 (1100-2¾)	NA
CIRCLING	4580-1¼ 1154 (1200-1¼)	4580-1½ 1154 (1200-1½)	4580-3 1154 (1200-3)	NA

NW-1, 11 JUN 2026 to 09 JUL 2026

NW-1, 11 JUN 2026 to 09 JUL 2026