

WAAS CH 45721 W23A	APP CRS 233°	Rwy Idg TDZE Apt Elev	5494 210 215
--	------------------------	-----------------------------	---

RNAV (GPS) RWY 23

EARLY COUNTY (BIJ)

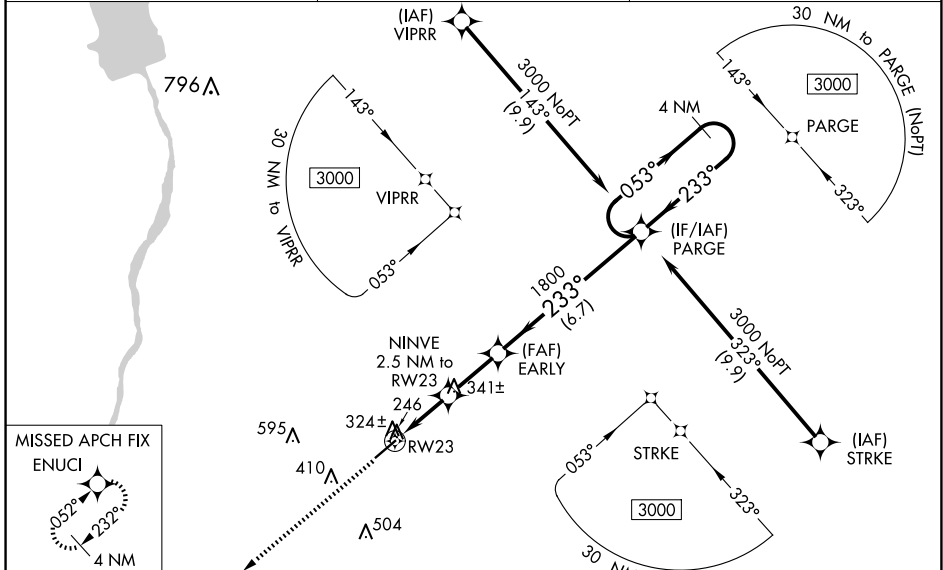
RNP APCH - GPS.

▼ Inop table does not apply to LPV, LNAV/VNAV and LNAV Cat A/B. For uncompensated Baro-VNAV systems, LNAV/VNAV NA below -15°C or above 54°C. Rwy 23 helicopter visibility reduction below ¼ SM NA. When local altimeter setting not received, use Bainbridge altimeter setting; increase LPV DA to 578 feet, LNAV/VNAV DA to 587 feet; increase all MDAs 80 feet and visibility LNAV Cat C/D ½ SM and Circling Cat C/D ¼ SM. For inop ALS, increase LNAV Cat C/D visibility to 1 ½ SM. Baro-VNAV and VDP NA when using Bainbridge altimeter setting.

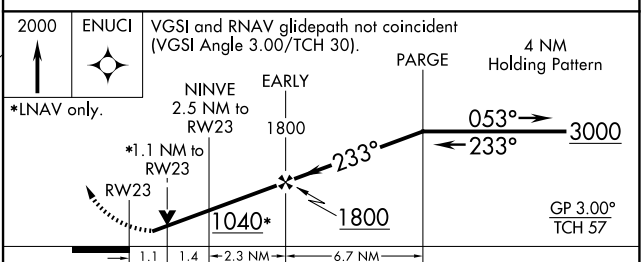
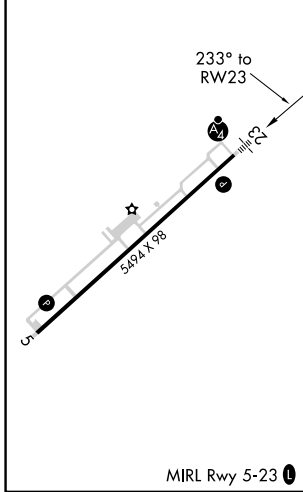
MALSF

MISSED APPROACH: Climb to 2000 direct ENUCI and hold.

AWOS-3PT 118.475	CAIRNS APP CON ★ 125.4 327.125	CTAF 122.9
----------------------------	--	----------------------



ELEV 215	TDZE 210
----------	----------



CATEGORY	A	B	C	D
LPV DA		501-1	291 (300-1)	
LNAV/VNAV DA		510-1	300 (300-1)	
LNAV MDA		600-1	390 (400-1)	
CIRCLING	720-1	505 (600-1)	860-1 ¾ 645 (700-1¾)	960-2 ½ 745 (800-2½)

SE-4, 11 JUN 2026 to 09 JUL 2026

SE-4, 11 JUN 2026 to 09 JUL 2026