

WAAS CH <b>40117</b> <b>W36A</b>	APP CRS <b>355°</b>	Rwy Ldg TDZE <b>1433</b> Apt Elev <b>1435</b>
--	------------------------	---

# RNAV (GPS) RWY 36

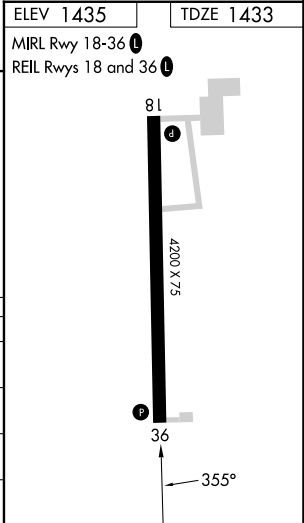
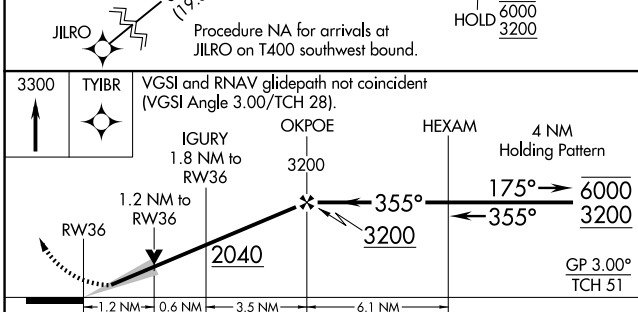
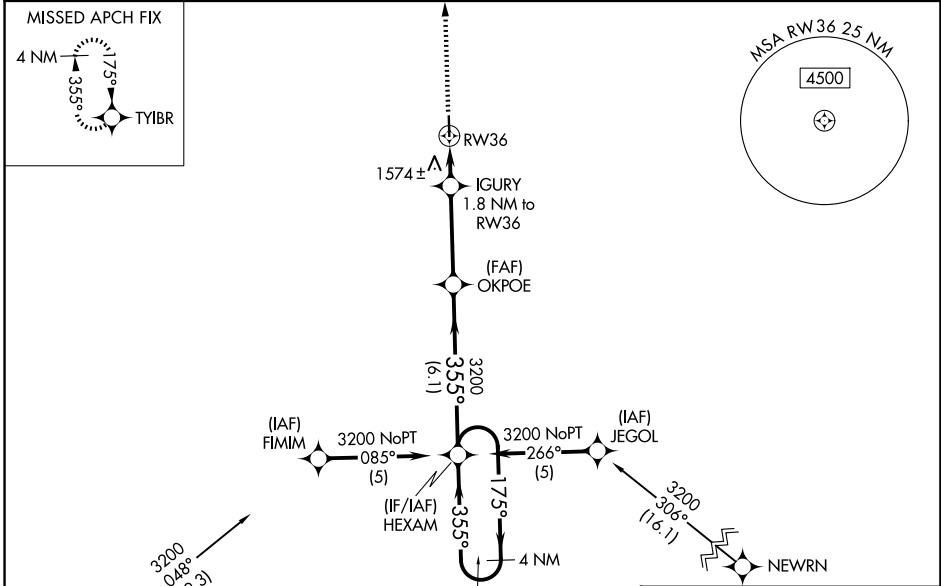
QUENTIN AANENSON FLD (L.Y.V)

RNP APCH - GPS.

**⚠** Baro-VNAV and VDP NA when using Pipestone altimeter setting. For uncompensated Baro-VNAV systems, LNAV/VNAV NA below -17°C or above 54°C. When local altimeter setting not received, use Pipestone altimeter setting: increase LPV DA to 1727 feet; increase LNAV/VNAV DA to 1977 feet and visibility all Cats ¼ SM; increase all MDAs 100 feet and visibility LNAV Cats C/D and Circling Cats B/C ¼ SM.

MISSED APPROACH: Climb to 3300 direct TYBR and hold.

AWOS-3 <b>119.825</b>	SIOUX FALLS APP CON * <b>125.8 284.725</b>	UNICOM <b>122.7 (CTAF) 0</b>
--------------------------	---	---------------------------------



CATEGORY	A	B	C	D
LPV DA	1633-1 200 (200-1)			
LNAV/VNAV DA	1883-1 3/8 450 (500-1 3/8)			
LNAV MDA	1840-1 407 (500-1)	1840-1 1/8 407 (500-1 1/8)		
CIRCLING	1940-1 505 (600-1)	2160-1 725 (800-1)	2360-2 3/4 925 (1000-2 3/4)	2360-3 925 (1000-3)

NC-1, 11 JUN 2026 to 09 JUL 2026

NC-1, 11 JUN 2026 to 09 JUL 2026