

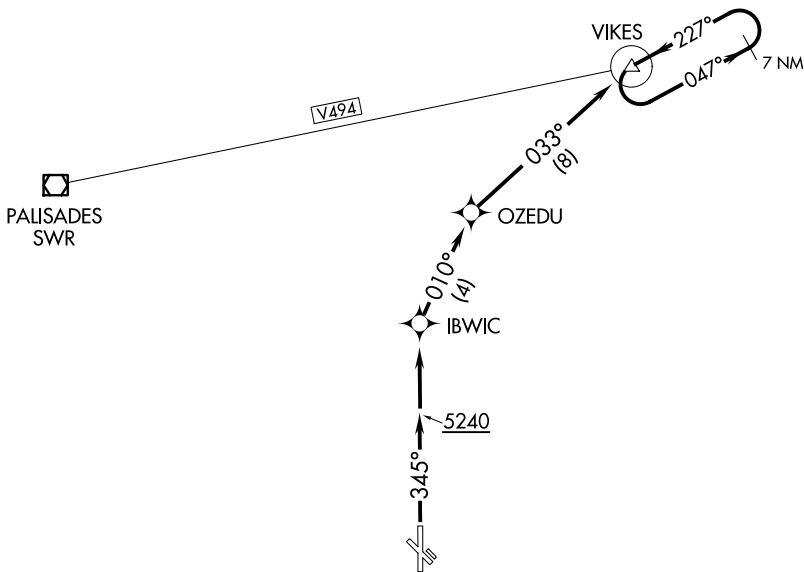
(MINDN3.VIKES) 26134

# MINDEN THREE DEPARTURE (OBSTACLE) (RNAV)

MINDEN-TAHOE (MEV)  
AL-9430 (FAA) MINDEN, NEVADA

NORCAL DEP CON  
119.2 279.55  
RENO TOWER  
118.7 257.8

RNAV 1 - GPS



### TAKEOFF MINIMUMS

Rwys 12, 16, 30: NA - obstacles.

Rwys 12L, 30R: NA - environmental.

Rwy 34: Standard with a minimum climb of 413'/NM to 7800.

### TAKEOFF OBSTACLE NOTES

Rwy 34: Vegetation beginning 13' from DER, 317' right of centerline, up to 4711' MSL.

Fence 236' from DER, 302' right of centerline, 6' AGL/4714' MSL.

NOTE: Chart not to scale.

### DEPARTURE ROUTE DESCRIPTION

**TAKEOFF RUNWAY 34:** Climb heading 345° to 5240 then direct IBWIC, then on track 010° to OZEDU, then on track 033° to VIKES, then climb in VIKES holding pattern (hold NE, left turn, 227° inbound) to cross VIKES at or above MEA/MCA for assigned route of flight.

MINDEN THREE DEPARTURE (OBSTACLE) (RNAV)  
(MINDN3.VIKES) 14MAY26

MINDEN, NEVADA  
MINDEN-TAHOE (MEV)

SW-4, 11 JUN 2026 to 09 JUL 2026

SW-4, 11 JUN 2026 to 09 JUL 2026