

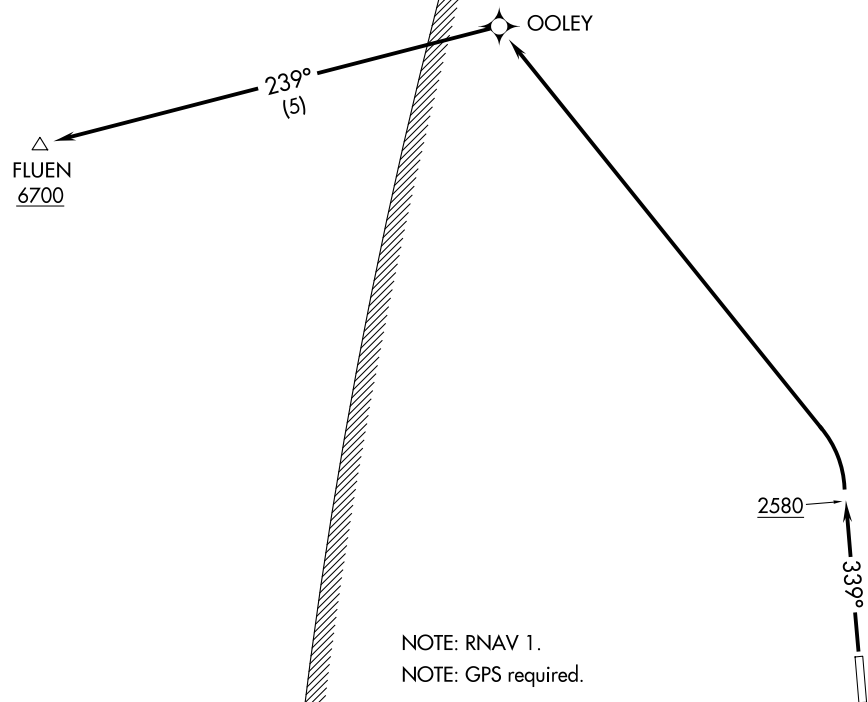
(FLUEN2.FLUEN) 21336

FLUEN TWO DEPARTURE (OBSTACLE) (RNAV)

ELLS FLD/WILLITS MUNI (O28)
AL-9480 (FAA) WILLITS, CALIFORNIA

OAKLAND CENTER
132.2 350.3

MAXWELL 3 MOA



NOTE: RNAV 1.
NOTE: GPS required.

TAKEOFF MINIMUMS

Rwy 16: NA-air traffic.
Rwy 34: Standard with minimum climb of
360' per NM to 6700.

TAKEOFF OBSTACLE NOTES

Rwy 34: Trees beginning 92' from DER, left and right of
centerline, up to 100' AGL/2139' MSL.

NOTE: Chart not to scale.

DEPARTURE ROUTE DESCRIPTION

TAKEOFF RUNWAY 34: Climb heading 339° to 2580, then left turn direct OOLEY,
and on track 239° to cross FLUEN at or above 6700.

FLUEN TWO DEPARTURE (OBSTACLE) (RNAV)
(FLUEN2.FLUEN) 30JUN11

WILLITS, CALIFORNIA
ELLS FLD/WILLITS MUNI (O28)

SW-2, 11 JUN 2026 to 09 JUL 2026

SW-2, 11 JUN 2026 to 09 JUL 2026