

WAAS CH 56212 W17A	APP CRS 167°	Rwy Idg 8500 TDZE 194 Apt Elev 194
--	------------------------	---

RNAV (GPS) RWY 17

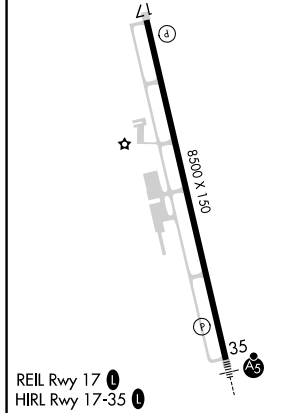
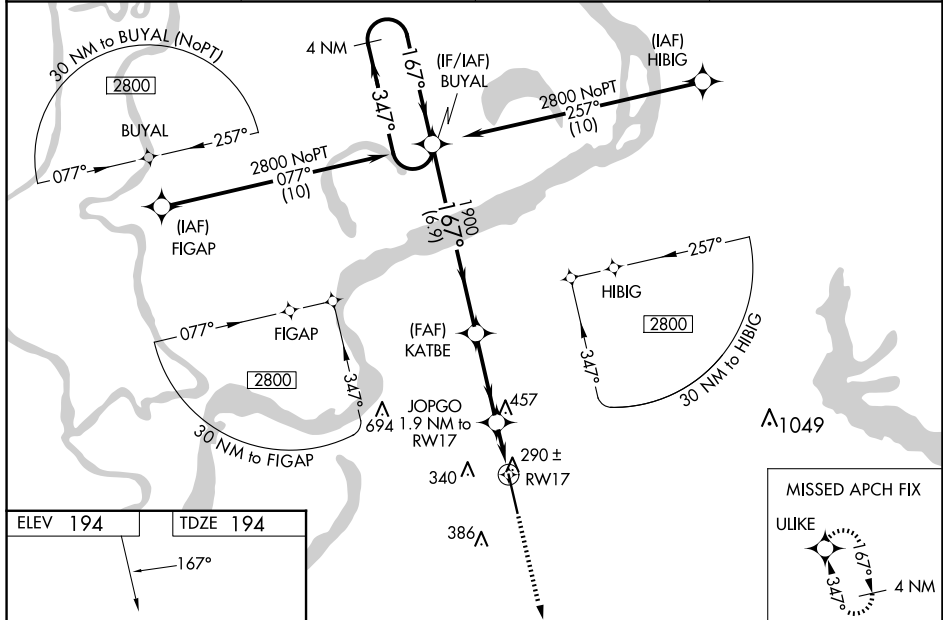
TUNICA MUNI (UTA)

RNP APCH.

⚠ For uncompensated Baro-VNAV systems, LNAV/VNAV NA below -15°C (5°F) or above 42°C (107°F). For inop ALS, increase LNAV/VNAV visibility all Cats to ¾ SM, and LNAV Cats C, D visibility to 1¾ SM. Baro VNAV and VDP NA when using Memphis altimeter setting. When local altimeter setting not received, use Memphis altimeter setting and increase LPV DA to 480, LNAV/VNAV DA to 557, and all MDA 100 feet, increase LNAV/VNAV visibility all Cats to 1 SM, and Circling Cat C visibility to 1¾ SM. For inop ALS when using Memphis altimeter setting, increase LPV all Cats visibility to ¾ SM, LNAV/VNAV all Cats visibility to 1 SM, LNAV Cats C/D visibility to 1¾ SM.

MISSED APPROACH:
Climb to 2800 direct
ULIKE and hold.

AWOS-3 118.075	MEMPHIS APP CON 119.1 291.6	CLNC DEL 118.9	UNICOM 123.0 (CTAF) 0
--------------------------	---------------------------------------	--------------------------	---------------------------------



ELEV 194		TDZE 194		
4 NM Holding Pattern BUYAL		KATBE		
2800 ← 347°		1900		
→ 167°		JOPGO 1.9 NM to RW17		
GP 3.00° TCH 50		*1.2 NM to RW17		
		RW17		
		*840		
		6.9 NM		
		3.3 NM		
		0.7		
		1.2 NM		
		D		
CATEGORY	A	B	C	D
LPV DA		394-¾	200 (200-¾)	
LNAV/VNAV DA		471-¾	277 (300-¾)	
LNAV MDA	640-¾	446 (500-¾)	640-1½	446 (500-1½)
CIRCLING	680-1	740-1	760-1½	760-2
	486 (500-1)	546 (600-1)	566 (600-1½)	566 (600-2)

SC-4, 11 JUN 2026 to 09 JUL 2026

SC-4, 11 JUN 2026 to 09 JUL 2026