

WAAS CH 60912 W35A	APP CRS 347°	Rwy Idg TDZE Apt Elev	8500 194 194
--	------------------------	-----------------------------	---

RNAV (GPS) RWY 35

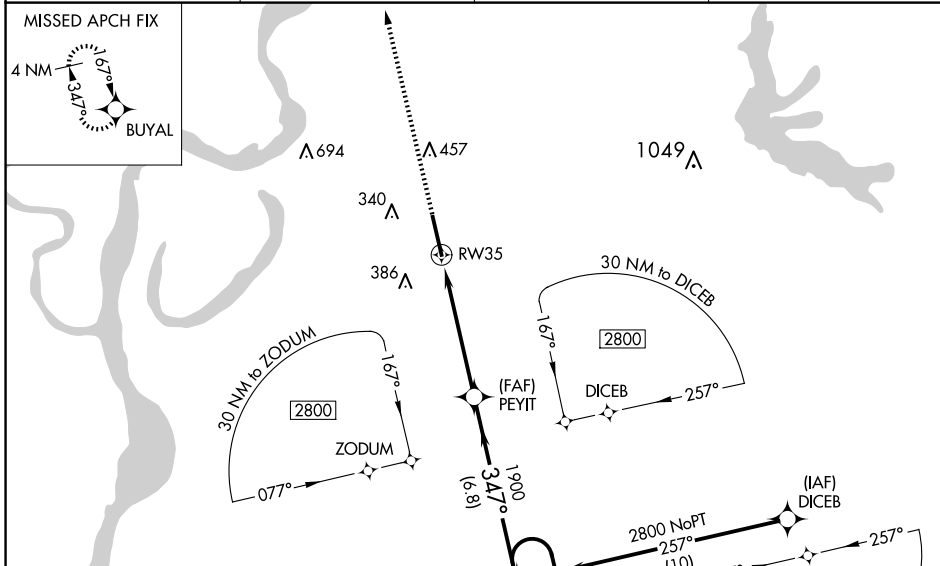
TUNICA MUNI (UTA)

⚠ For uncompensated Baro-VNAV systems, LNAV/VNAV NA below -15°C (5°F) or above 42°C (107°F). For inop MALSRS, increase LNAV/VNAV all Cats visibility to ¾ mile. DME/DME RNP-0.3 NA. Baro-VNAV and VDP NA when using Memphis altimeter setting. When local altimeter setting not received, use Memphis altimeter setting and increase LPV DA to 480, LNAV/VNAV DA to 530, and all MDA 100 feet; increase LNAV/VNAV visibility all Cats ½ mile, increase LNAV Cat C, D and Circling Cat C visibility ¼ mile. For inop MALSRS when using Memphis altimeter setting, increase LPV all Cats visibility to ¾ mile.

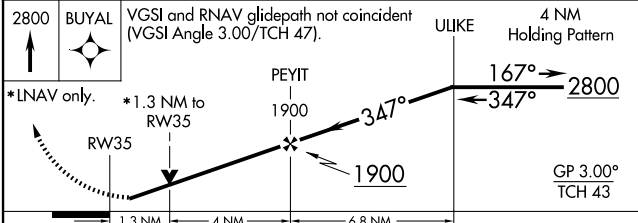
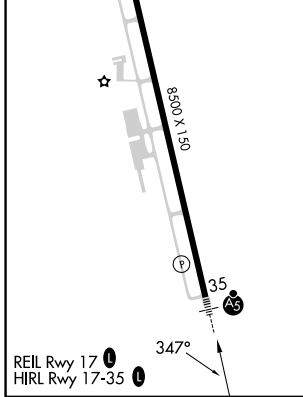


MISSED APPROACH:
Climb to 2800 direct BUYAL and hold.

AWOS-3 118.075	MEMPHIS APP CON 119.1 291.6	CLNC DEL 118.9	UNICOM 123.0 (CTAF) 0
--------------------------	---------------------------------------	--------------------------	---------------------------------



ELEV	194	TDZE	194
------	-----	------	-----



CATEGORY	A	B	C	D
LPV DA	394-½ 200 (200-½)			
LNAV/VNAV DA	444-½ 250 (300-½)			
LNAV MDA	640-½	446 (500-½)	640-7/8	446 (500-7/8)
CIRCLING	680-1	740-1	760-1½	760-2
	486 (500-1)	546 (600-1)	566 (600-1½)	566 (600-2)

SC-4, 11 JUN 2026 to 09 JUL 2026

SC-4, 11 JUN 2026 to 09 JUL 2026