

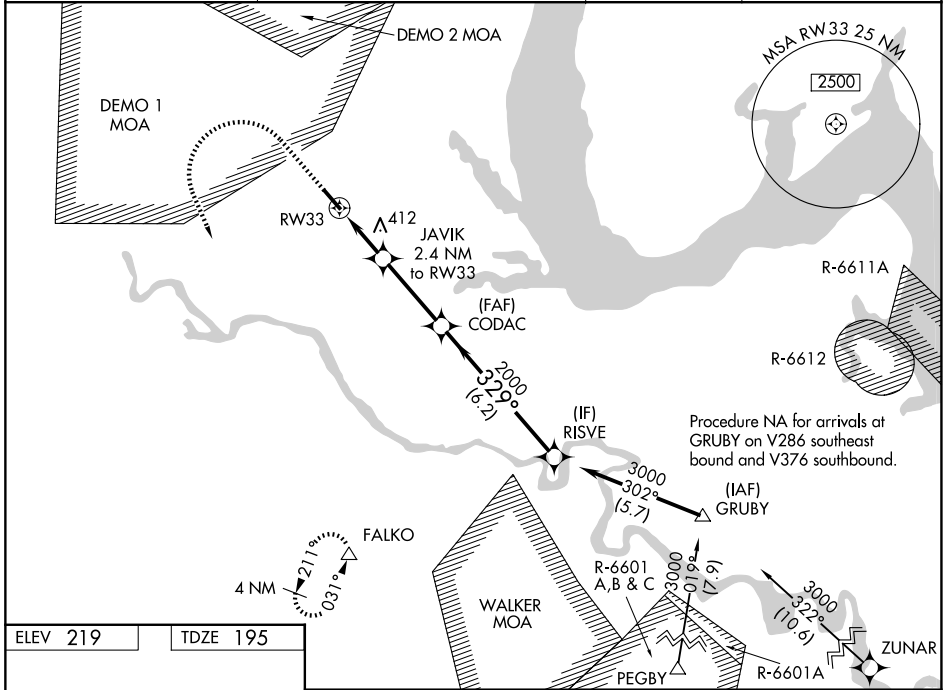
WAAS CH 81805 W33A	APP CRS 329°	Rwy Ldg TDZE Apt Elev	6000 195 219
--	------------------------	-----------------------------	---

RNAV (GPS) RWY 33

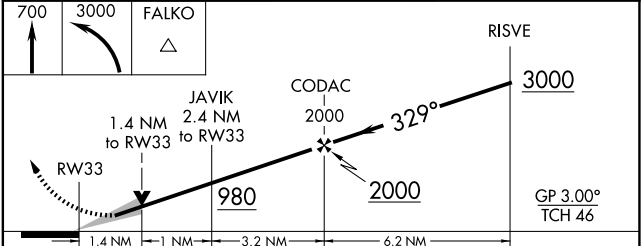
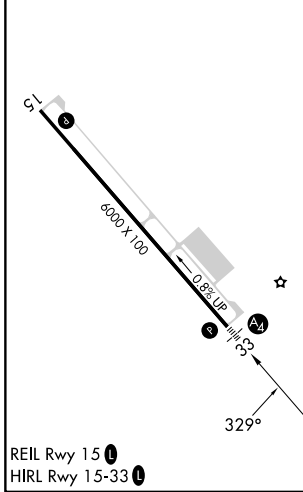
WASHINGTON EXEC/STAFFORD RGNL (R.MN)

RNP APCH - GPS.	MALS	MISSED APPROACH: Climb to 700 then climbing left turn to 3000 direct FALKO and hold, continue climb-in-hold to 3000.
<p>▼ Inop table does not apply to LPV all Cats. For uncompensated Baro-VNAV systems, LNAV/VNAV NA below -15°C or above 54°C. Circling Rwy 15 NA at night.</p>		

AWOS-3 126.325	QUANTICO APP CON * 127.05 290.375	GCO 135.075	UNICOM 122.725 (CTAF)
--------------------------	---	-----------------------	---------------------------------



ELEV 219	TDZE 195
----------	----------



CATEGORY	A	B	C	D
LPV DA	445-¾ 250 (300-¾)			
LNAV/VNAV DA	680-1½ 485 (500-1½)			
LNAV MDA	680-¾	485 (500-¾)	680-1½	485 (500-1½)
CIRCLING	720-1 501 (600-1)	820-1 601 (700-1)	820-1¾ 601 (700-1¾)	1040-2¾ 821 (900-2¾)

NE-3, 11 JUN 2026 to 09 JUL 2026

NE-3, 11 JUN 2026 to 09 JUL 2026