

| | |
|------------------------|-------------------------|
| APP CRS 253° | Rwy Ldg 4498 |
| | TDZE 2241 |
| | Apt Elev 2241 |

RNAV (GPS) RWY 25

JOHNSON COUNTY (6A.4)

RNP APCH - GPS.

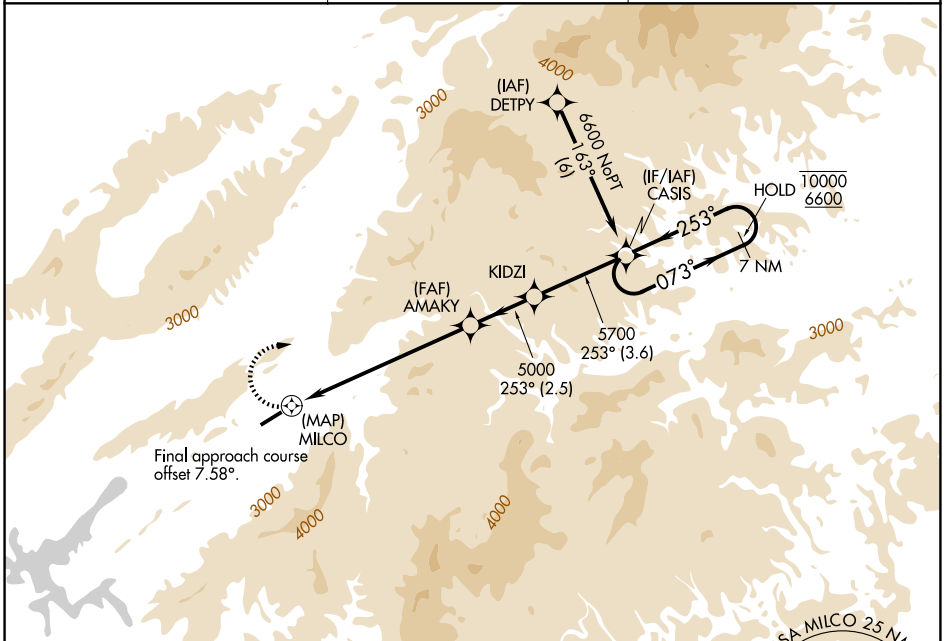
NA Rwy 25 helicopter visibility reduction below 1 SM NA. Circling NA for Cats C and D south of Rwy 7-25. When local altimeter setting not received, use Abingdon altimeter setting and increase all MDAs 80 feet. Procedure NA at night.

MISSED APPROACH:
Climbing right turn to 6600 direct CASIS and hold.

AWOS-3
126.225

TRI-CITY APP CON ★
134.425 349.0

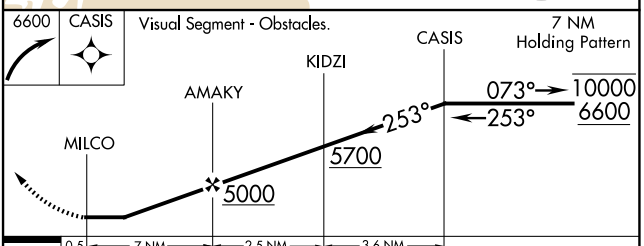
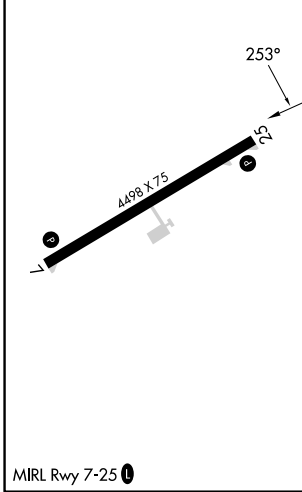
UNICOM
122.7 (CTAF)



SE-1, 11 JUN 2026 to 09 JUL 2026

SE-1, 11 JUN 2026 to 09 JUL 2026

| | |
|-----------|-----------|
| ELEV 2241 | TDZE 2241 |
|-----------|-----------|



| CATEGORY | A | B | C | D |
|----------|---------------------------|---------------------------|-------------------------|---|
| LNAV MDA | 4880-1¼ 2639 (2700-1¼) | 4880-1½ 2639 (2700-1½) | 4880-3 2639 (2700-3) | |
| CIRCLING | 4880-1¼ 2639 (2700-1¼) | 4880-1½ 2639 (2700-1½) | 4880-3 2639 (2700-3) | |