

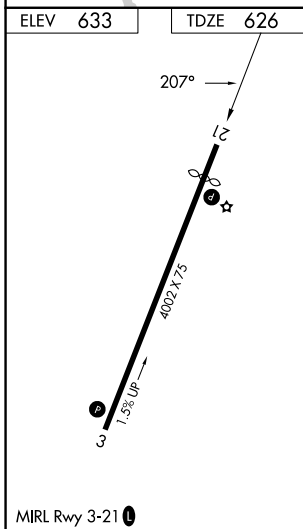
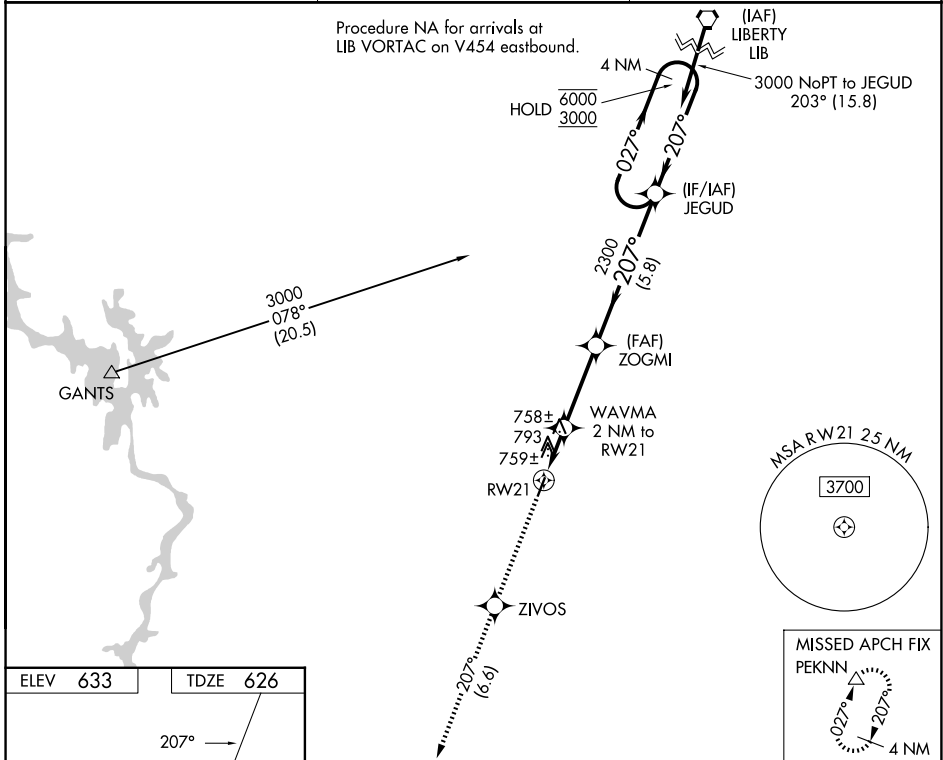
WAAS CH 72935 W21A	APP CRS 207°	Rwy Ldg TDZE 626 Apt Elev 633
--	------------------------	---

RNAV (GPS) RWY 21

MONTGOMERY COUNTY (43A)

RNP APCH-GPS.	MISSED APPROACH: Climb to 3000 direct ZIVOS and on track 207° to PEKNN and hold.
<p>▼ Rwy 21 helicopter visibility reduction below 1 SM NA. Use Asheboro altimeter setting; when not received, use Albemarle altimeter setting. Procedure NA at night.</p> <p>▲ NA</p>	

HBI AWOS-3 119.275	FAYETTEVILLE APP CON 127.8 343.725	UNICOM 122.8 (CTAF) 0
------------------------------	--	---------------------------------



3000	ZIVOS	PEKNN	Visual Segment - Obstacles.	
↑	✦	tr 207°	JEGUD 4 NM Holding Pattern	
		△		
	WAVMA 2 NM to RW21	ZOGMI		
	RW21	2300	6000 / 3000	
	1280	207°		
	2 NM	3.2 NM	5.8 NM	
CATEGORY	A	B	C	D
LP MDA	1060-1	434 (500-1)		NA
LNAV MDA	1100-1	474 (500-1)		NA
CIRCLING	1240-1 607 (700-1)	1340-1 707 (800-1)		NA

SE-2, 11 JUN 2026 to 09 JUL 2026

SE-2, 11 JUN 2026 to 09 JUL 2026