

WAAS CH <b>77841</b> W16A	APP CRS <b>155°</b>	Rwy Ldg <b>3300</b> TDZE <b>386</b> Apt Elev <b>386</b>
---------------------------------	------------------------	---

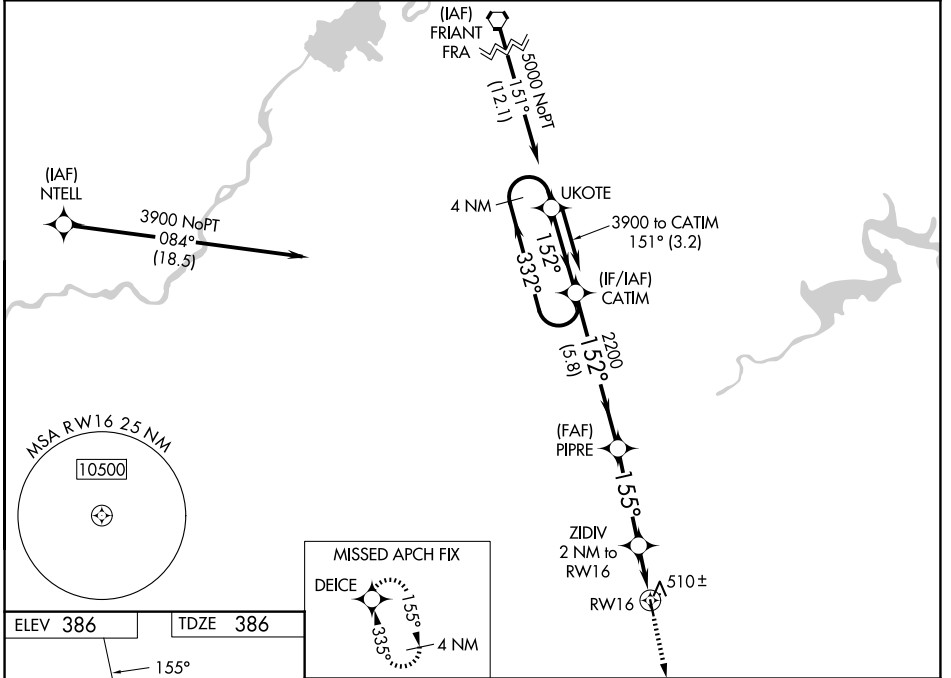
# RNAV (GPS) RWY 16

REEDLEY MUNI (O32)

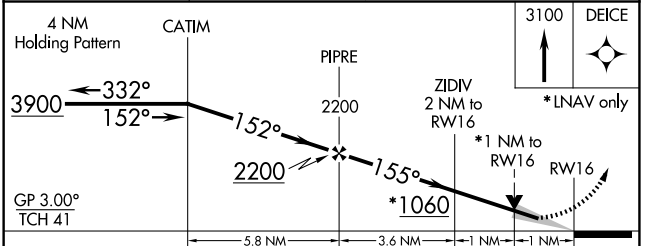
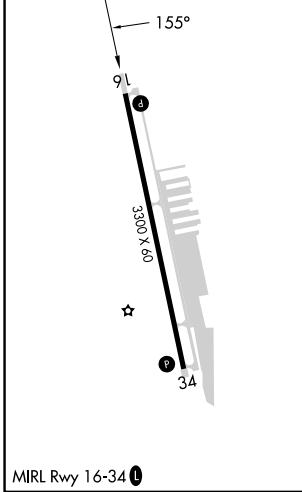
**⚠ NA** For uncompensated Baro-VNAV systems, LNAV/VNAV NA below -1.5°C (5°F) or above 54°C (130°F). Circling NA east of Rwy 16-34. Baro-VNAV and VDP NA when using Fresno Yosemite Intl altimeter setting. DME/DME RNP-0.3 NA. When local altimeter setting not received, use Fresno Yosemite Intl altimeter setting; increase all DAs 41 feet and all visibilities 1/2 SM; increase all MDAs 60 feet.

**MISSED APPROACH:** Climb to 3100 direct DEICE and hold, continue climb-in-hold to 3100.

AWOS-3PT <b>120.175</b>	FRESNO APP CON <b>132.35 323.25</b>	UNICOM <b>122.7 (CTAF)</b>
----------------------------	--	-------------------------------



ELEV 386	TDZE 386
----------	----------



CATEGORY	A	B	C	D
LPV DA	636-3/4	250 (300-3/4)		NA
LNAV/VNAV DA	672-7/8	286 (300-7/8)		NA
LNAV MDA	760-1	374 (400-1)		NA
CIRCLING	800-1	840-1		NA
	414 (500-1)	454 (500-1)		

SW-2, 11 JUN 2026 to 09 JUL 2026

SW-2, 11 JUN 2026 to 09 JUL 2026