

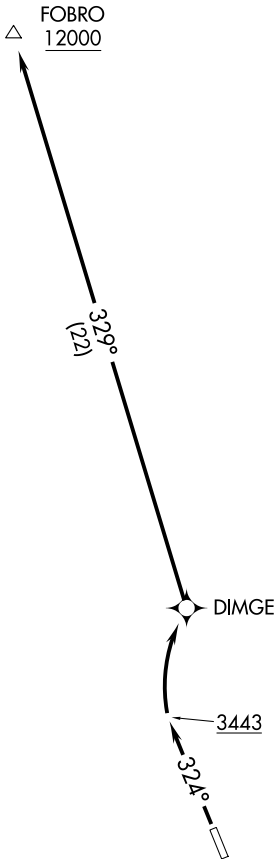
(FOBRO1.FOBRO) 17229

# FOBRO ONE DEPARTURE (OBSTACLE) (RNAV)

AL-10021 (FAA)

WEED (O46)  
WEED, CALIFORNIA

SEATTLE CENTER  
124.85 306.3  
UNICOM  
122.7



NOTE: RNAV 1.  
NOTE: GPS required.

### TAKEOFF MINIMUMS

Rwy 14: NA-obstacles.

Rwy 32: Standard with minimum climb of  
325' per NM to 12000.

NOTE: Chart not to scale.

### DEPARTURE ROUTE DESCRIPTION

TAKEOFF RUNWAY 32: Climb heading 324° to 3443, then right turn direct DIMGE, then on track 329° to cross FOBRO at or above 12000 or as assigned by ATC.

FOBRO ONE DEPARTURE (OBSTACLE) (RNAV)  
(FOBRO1.FOBRO) 22JUN17

WEED, CALIFORNIA  
WEED (O46)

SW-2, 11 JUN 2026 to 09 JUL 2026

SW-2, 11 JUN 2026 to 09 JUL 2026