

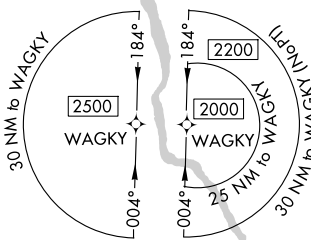
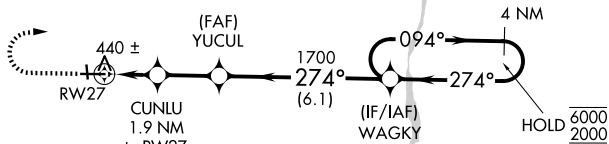
APP CRS	Rwy Ldg	<b>5002</b>
<b>274°</b>	TDZE	<b>359</b>
	Apt Elev	<b>359</b>

# RNAV (GPS) RWY 27

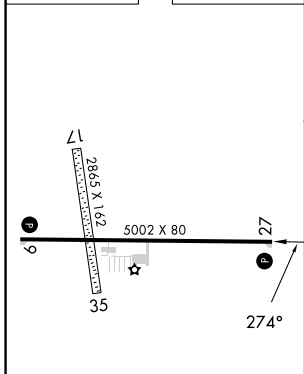
HEADLAND MUNI (HDL)

RNP APCH - GPS.	<p><b>▽</b> Circling NA to Rwy 17 and 35. Rwy 27 helicopter visibility reduction below 1 SM NA. Straight-in Rwy 27 NA at night, Circling Rwy 27 NA at night.</p>	<p><b>MISSED APPROACH:</b> Climb to 900 then climbing right turn to 2000 direct WAGKY and hold.</p>
-----------------	--	---

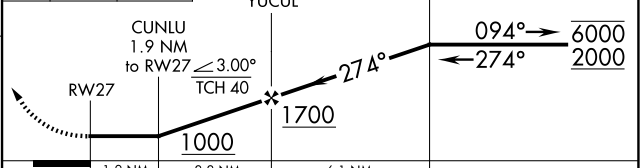
AWOS-3PT <b>119.575</b>	CAIRNS APP CON★ <b>125.4</b>	CTAF <b>122.90</b>
----------------------------	---------------------------------	-----------------------



ELEV 359	TDZE 359
----------	----------



900	2000	WAGKY	VGSI and descent angle not coincident (VGSI Angle 3.50/TCH 40).	4 NM Holding Pattern
-----	------	-------	---	----------------------



CATEGORY	A	B	C	D
LNAV MDA	720-1 361 (400-1)			NA
CIRCLING	860-1 501 (600-1)	940-1 581 (600-1)	980-1 <sup>3</sup> / <sub>4</sub> 621 (700-1 <sup>3</sup> / <sub>4</sub> )	NA

MIRL Rwy 9-27  
REIL Rwy 9 and 27

SE-4, 11 JUN 2026 to 09 JUL 2026

SE-4, 11 JUN 2026 to 09 JUL 2026