

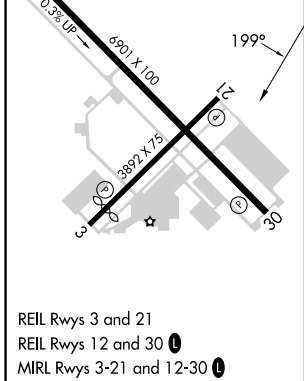
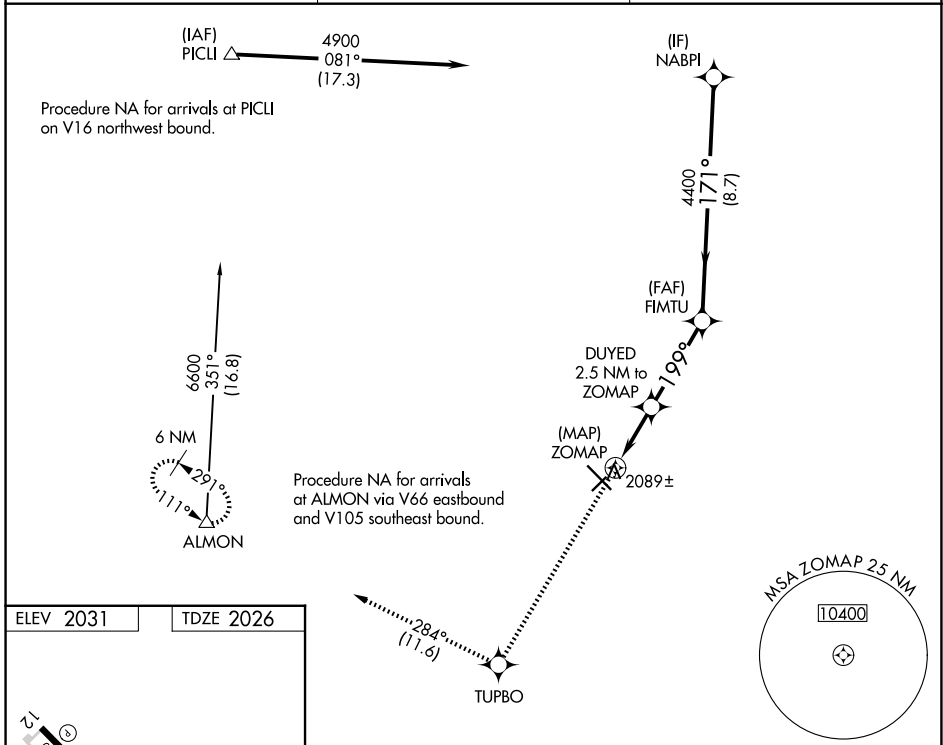
WAAS CH 56325 W21A	APP CRS 199°	Rwy Ldg TDZE Apt Elev	3892 2026 2031
--	------------------------	-----------------------------	---

RNAV (GPS) RWY 21

MARANA RGNL (AVQ)

RNP APCH.	<p>⚠ NA Rwy 21 helicopter visibility reduction below 1 SM NA. When local altimeter setting not received, use Ryan Fld altimeter setting and increase all MDAs 100 feet, increase LP Cat C visibility $\frac{1}{8}$ SM and increase LNAV Cat C visibility $\frac{1}{4}$ SM.</p>	<p>MISSED APPROACH: Climb to 6700 direct TUPBO and on track 284° to ALMON and hold, continue climb-in-hold 6700.</p>
-----------	---	--

AWOS-3 118.375	TUCSON APP CON 119.4 318.1	UNICOM 123.0 (CTAF) 0
--------------------------	--------------------------------------	---------------------------------



6700	TUPBO	ALMON	VGSI and descent angles not coincident (VGSI Angle 2.91/TCH 41).	
↑	✧	△	NABPI	
DUYED 2.5 NM to ZOMAP		FIMTU	4900	
ZOMAP		3120	4400	171°
0.5	2.5 NM	3.6 NM	8.7 NM	
CATEGORY	A	B	C	D
LP MDA	2340-1 314 (400-1)			NA
LNAV MDA	2640-1	614 (700-1)	2640-1 $\frac{3}{4}$ 614 (700-1 $\frac{3}{4}$)	NA

SW-4, 11 JUN 2026 to 09 JUL 2026

SW-4, 11 JUN 2026 to 09 JUL 2026