

APP CRS	Rwy Ldg	N/A
282°	TDZE	N/A
	Apt Elev	2032

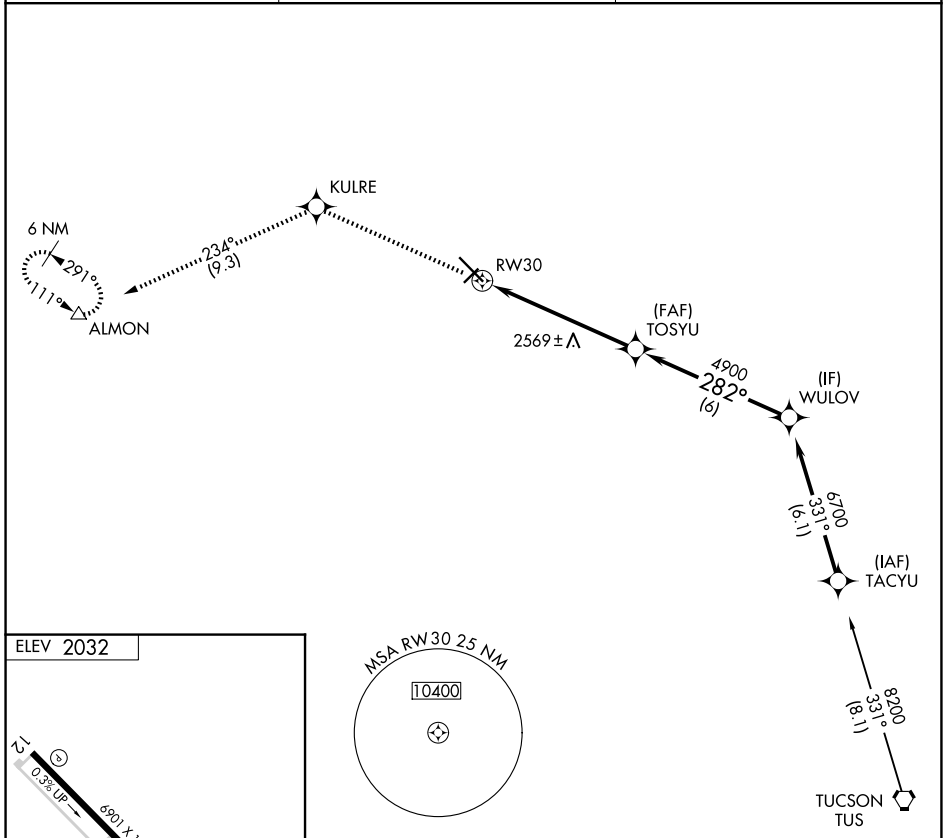
RNAV (GPS)-E

MARANA RGNL (AVQ)

⚠ When local altimeter setting not received, use Ryan Fld altimeter setting and increase all MDAs 100 feet and increase Circling Cat A visibility ¼ SM and Cat C ½ SM. DME/DME RNP-0.3 NA.

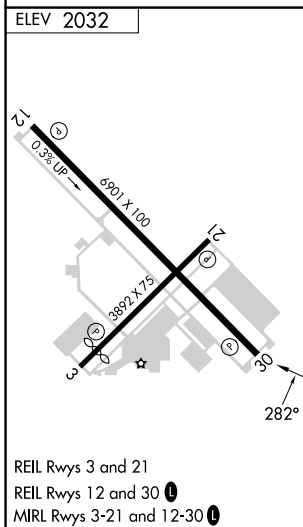
⚠ MISSED APPROACH: Climb to 6000 direct KULRE and 234° track to ALMON and hold, continue climb-in-hold to 6000.

AWOS-3 118.375	TUCSON APP CON 119.4 318.1	UNICOM 123.0 (CTAF) 0
--------------------------	--------------------------------------	---------------------------------



SW-4, 11 JUN 2026 to 09 JUL 2026

SW-4, 11 JUN 2026 to 09 JUL 2026



6000	KULRE	234° tr	ALMON	TOSYU	WULOV
				4900	6700
				282°	Procedure Turn NA
				6 NM	6 NM
CATEGORY	A	B	C	D	
CIRCLING	2820-1 788 (800-1)	2820-1¼ 788 (800-1¼)	2820-2¼ 788 (800-2¼)	NA	