

WAAS CH <b>65908</b> W <b>34A</b>	APP CRS <b>336°</b>	Rwy Ldg <b>3998</b> TDZE <b>684</b> Apt Elev <b>686</b>
---	------------------------	---

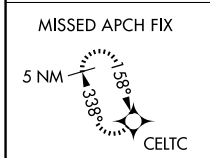
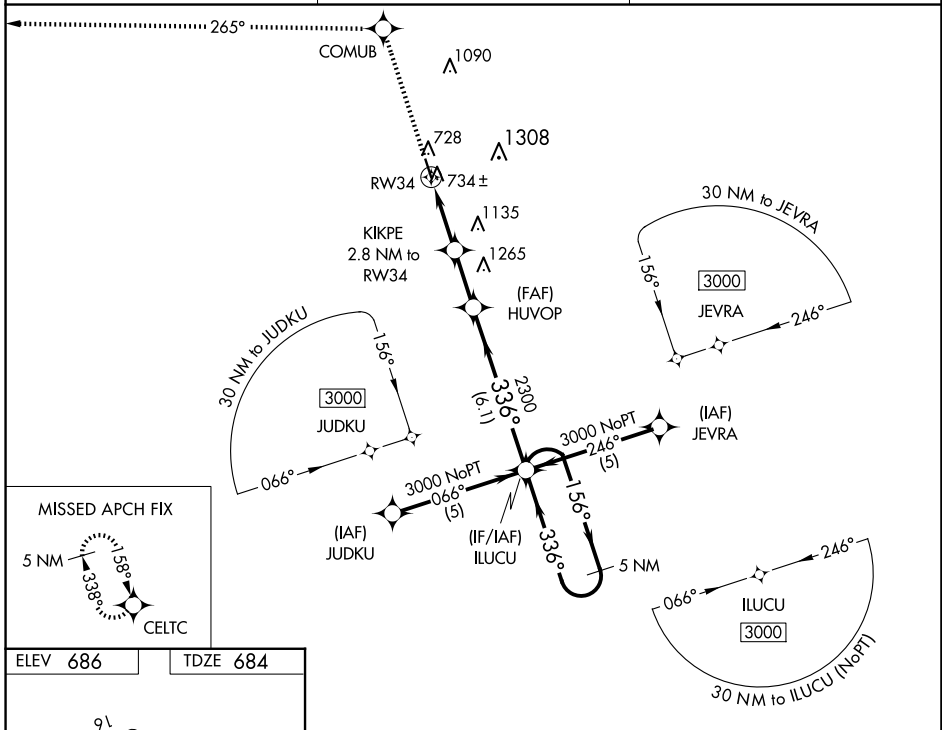
# RNAV (GPS) RWY 34

HILLSBORO MUNI (INJ)

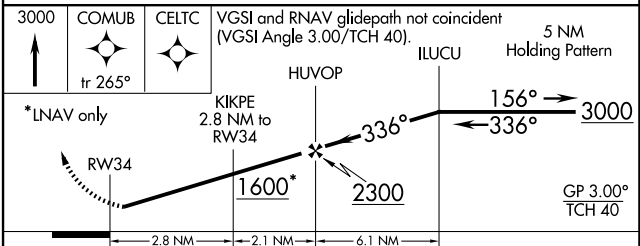
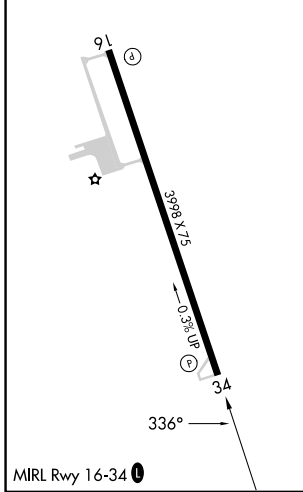
⚠ Baro-VNAV NA when using Cleburne Rgnl altimeter setting. DME/DME RNP-0.3 NA. For uncompensated Baro-VNAV systems, LNAV/VNAV NA below -16°C (4°F) or above 54°C (130°F). Visibility reduction by helicopters NA. When local altimeter setting not received use Cleburne Rgnl altimeter setting and increase all DA/MDA 80 feet, increase LPV and LNAV/VNAV visibility ¼ mile all Cats.

⚠ MISSED APPROACH: Climb to 3000 direct COMUB and via 265° track to CELTC and hold.

AWOS-3PT <b>118.725</b>	WACO APP CON ★ <b>127.65 352.0</b>	CTAF <b>122.90</b>
----------------------------	---------------------------------------	-----------------------



ELEV 686	TDZE 684
----------	----------



CATEGORY	A	B	C	D
LPV DA	934-1	250 (300-1)		NA
LNAV/VNAV DA	1004-1¼	320 (400-1¼)		NA
LNAV MDA	1320-1	636 (700-1)		NA
CIRCLING	1320-1	634 (700-1)		NA

SC-2, 11 JUN 2026 to 09 JUL 2026

SC-2, 11 JUN 2026 to 09 JUL 2026