

(ALTNN2.ALTNN) 24081

AL-10263 (FAA)

ALTNN TWO DEPARTURE (RNAV)

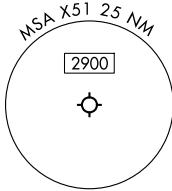
MIAMI HOMESTEAD GENERAL AVIATION (X51)
HOMESTEAD, FLORIDA

MIAMI DEP CON
125.5 354.1
AWOS-3
118.375
CTAF
122.8

RNAV 1 - DME/DME/IRU or GPS.

RADAR required.

**TOP ALTITUDE:
ASSIGNED BY ATC**

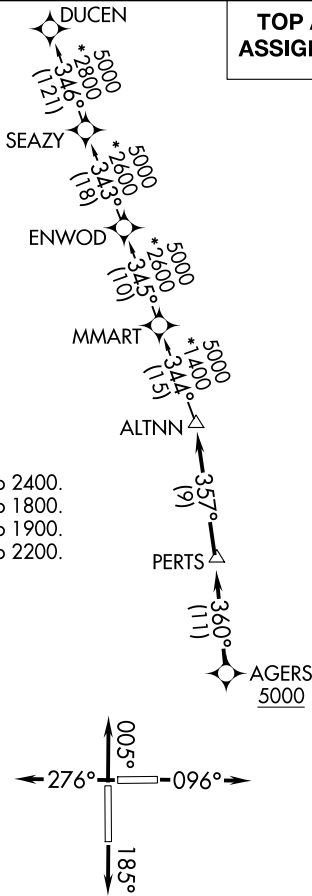


TAKEOFF MINIMUMS

- Rwy 10: Standard with minimum climb of 500'/NM to 2400.
- Rwy 18: Standard with minimum climb of 500'/NM to 1800.
- Rwy 28: Standard with minimum climb of 500'/NM to 1900.
- Rwy 36: Standard with minimum climb of 500'/NM to 2200.

NOTE: Jet aircraft only.

NOTE: Accelerate to 250K until leaving 10000,
if unable, advise ATC.



NOTE: Chart not to scale.

DEPARTURE ROUTE DESCRIPTION

TAKEOFF RUNWAY 10: Climb on heading 096° or as assigned by ATC for RADAR vectors to cross AGERS at or above 5000, thence. . . .

TAKEOFF RUNWAY 18: Climb on heading 185° or as assigned by ATC for RADAR vectors to cross AGERS at or above 5000, thence. . . .

TAKEOFF RUNWAY 28: Climb on heading 276° or as assigned by ATC for RADAR vectors to cross AGERS at or above 5000, thence. . . .

TAKEOFF RUNWAY 36: Climb on heading 005° or as assigned by ATC for RADAR vectors to cross AGERS at or above 5000, thence. . . .

. . . . on track 360° to PERTS, then on track 357° to ALTNN, then on assigned transition, maintain ATC assigned altitude, expect filed altitude within 10 minutes after departure.

DUCEN TRANSITION (ALTNN2.DUCEN)

SE-3, 11 JUN 2026 to 09 JUL 2026

SE-3, 11 JUN 2026 to 09 JUL 2026

ALTNN TWO DEPARTURE (RNAV)
(ALTNN2.ALTNN) 21MAR24

HOMESTEAD, FLORIDA
MIAMI HOMESTEAD GENERAL AVIATION (X51)