

(FLMGO2.FLMGO) 24081

AL-10263 (FAA)

MIAMI HOMESTEAD GENERAL AVIATION (X51)

HOMESTEAD, FLORIDA

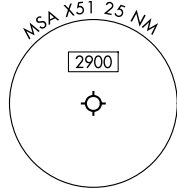
# FLMGO TWO DEPARTURE(RNAV)

RNAV 1 - DME/DME/IRU or GPS.

RADAR required.

**TOP ALTITUDE:  
ASSIGNED BY ATC**

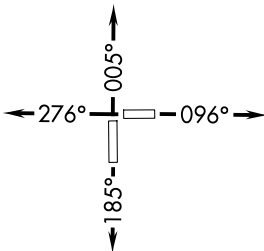
MIAMI DEP CON  
125.5 354.1  
AWOS-3  
118.375  
CTAF  
122.8



- NOTE: Jet aircraft only.
- NOTE: Accelerate to 250K until leaving 10000, if unable, advise ATC.
- NOTE: WAPOM Transition ATC assigned except aircraft landing: MCO, DAB, and MLB terminal areas.

### TAKEOFF MINIMUMS

- Rwy 10: Standard with minimum climb of 500'/NM to 2400.
- Rwy 18: Standard with minimum climb of 500'/NM to 1800.
- Rwy 28: Standard with minimum climb of 500'/NM to 1900.
- Rwy 36: Standard with minimum climb of 500'/NM to 2200.



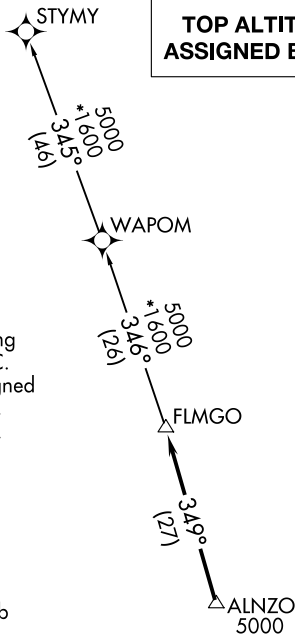
NOTE: Chart not to scale.

### DEPARTURE ROUTE DESCRIPTION

- TAKEOFF RUNWAY 10: Climb on heading 096° or as assigned by ATC for RADAR vectors to cross ALNZO at or above 5000, thence. . . .
- TAKEOFF RUNWAY 18: Climb on heading 185° or as assigned by ATC for RADAR vectors to cross ALNZO at or above 5000, thence. . . .
- TAKEOFF RUNWAY 28: Climb on heading 276° or as assigned by ATC for RADAR vectors to cross ALNZO at or above 5000, thence. . . .
- TAKEOFF RUNWAY 36: Climb on heading 005° or as assigned by ATC for RADAR vectors to cross ALNZO at or above 5000, thence. . . .

. . . on track 349° to FLMGO, then on assigned transition. Maintain ATC assigned altitude. Expect filed altitude within 10 minutes after departure.

- STYMY TRANSITION (FLMGO2.STYMY)
- WAPOM TRANSITION (FLMGO2.WAPOM)



SE-3, 11 JUN 2026 to 09 JUL 2026

SE-3, 11 JUN 2026 to 09 JUL 2026

FLMGO TWO DEPARTURE(RNAV)  
(FLMGO2.FLMGO) 21MAR24

HOMESTEAD, FLORIDA  
MIAMI HOMESTEAD GENERAL AVIATION (X51)