

MAYNR THREE DEPARTURE (RNAV)

SE-3, 11 JUN 2026 to 09 JUL 2026

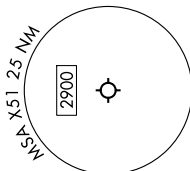
MIAMI DEP CON
125.5 354.1
AWOS-3
118.375
CTAF
122.8

RNAV 1 - DME/DME/IRU or GPS.
From SUIPT to MAXIM: RNAV 1 - GPS.
From SUIPT to CANOA: RNAV 1 - GPS.
RADAR required for non-GPS equipped aircraft.
RADAR required.

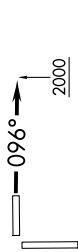
TAKEOFF MINIMUMS

- Rwy 10: Standard with minimum climb of 500'/NM to 2400.
- Rwy 18: Standard with minimum climb of 500'/NM to 1800.
- Rwy 28: Standard with minimum climb of 500'/NM to 1900.
- Rwy 36: Standard with minimum climb of 500'/NM to 2200.

NOTE: Jet aircraft only.
NOTE: Accelerate to 250K until leaving 10000, if unable, advise ATC.

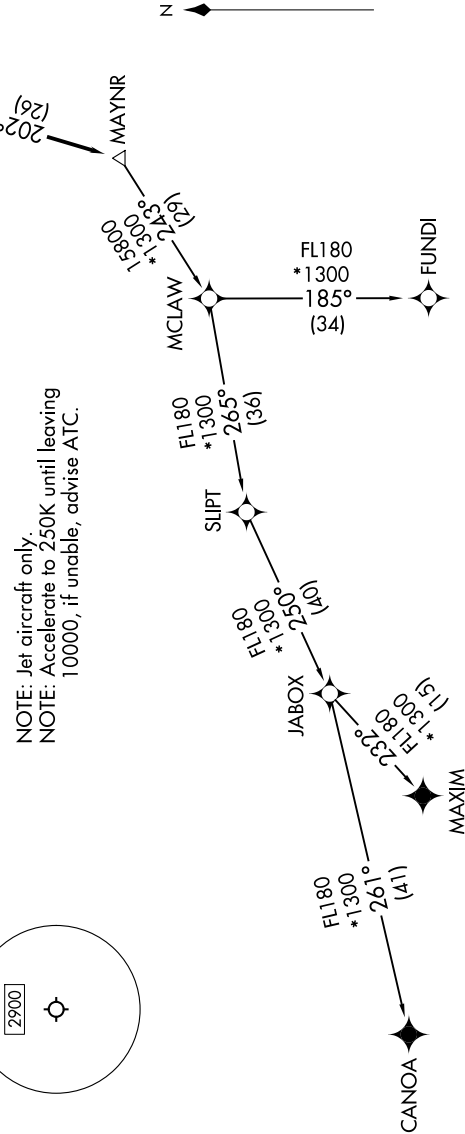


TOP ALTITUDE:
ASSIGNED BY ATC



096°

AUSTI
5000



NOTE: Chart not to scale.

(CONTINUED ON FOLLOWING PAGE)

SE-3, 11 JUN 2026 to 09 JUL 2026

MAYNR THREE DEPARTURE (RNAV)