

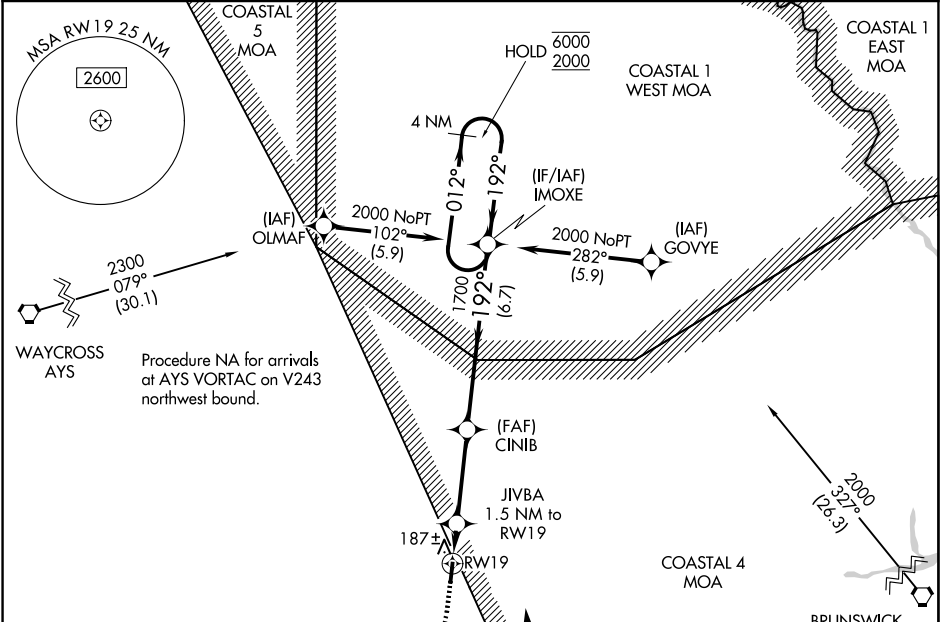
APP CRS	Rwy Ldg	3300
192°	TDZE	85
	Apt Elev	85

RNAV (GPS) RWY 19

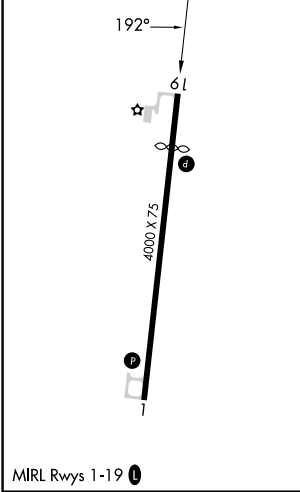
BRANTLEY COUNTY (4J1)

RNP APCH - GPS.	MISSED APPROACH: Climb to 700 then climbing left turn to 2000 direct IMOXE and hold.
▼ Rwy 19 helicopter visibility reduction below 3/4 SM NA. Use BQK altimeter setting.	

BQK AWOS-3 124.175	JACKSONVILLE CENTER 127.575 269.025	CTAF 122.9
------------------------------	---	----------------------



ELEV 85	TDZE 85
---------	---------



700	2000	IMOXE	4 NM Holding Pattern	
↑	↶	✧		
CINIB		IMOXE	012° → 6000	
JIVBA 1.5 NM to RWY 19		← 192°	2000	
RWY 19		1700		
→ 1.5 NM		→ 3.4 NM		
→ 6.7 NM				
CATEGORY	A	B	C	D
LNAV MDA	500-1	415 (500-1)	500-1 1/8	415 (500-1 1/8)
CIRCLING	560-1	720-1	720-1 3/4	780-2 1/4
	475 (500-1)	635 (700-1)	635 (700-1 3/4)	695 (700-2 1/4)

SE-4, 11 JUN 2026 to 09 JUL 2026

SE-4, 11 JUN 2026 to 09 JUL 2026