

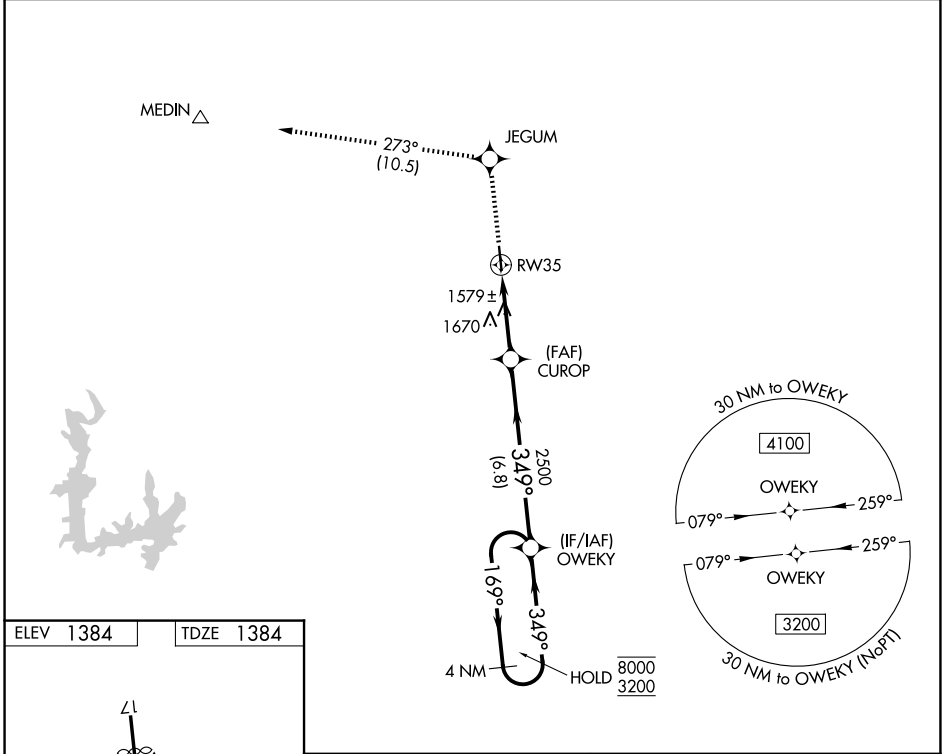
WAAS CH 69428 W35A	APP CRS 349°	Rwy Ldg TDZE Apt Elev	3920 1384 1384
--	------------------------	-----------------------------	---

RNAV (GPS) RWY 35

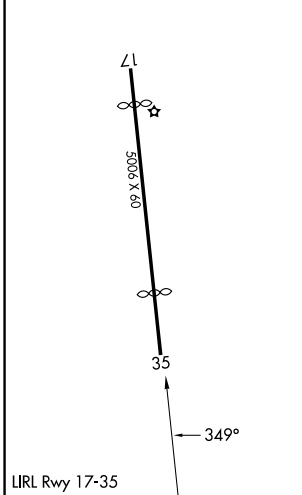
BOERNE STAGE AIRFIELD (5C1)

RNP APCH-GPS.	MISSED APPROACH: Climb to 4100 direct JEGUM and on track 273° to MEDIN.
<p>▼ Rwy 35 helicopter visibility reduction below 1 SM NA. When local altimeter setting not received, use San Antonio Intl altimeter setting and increase all MDAs 120 feet.</p> <p>▲</p>	

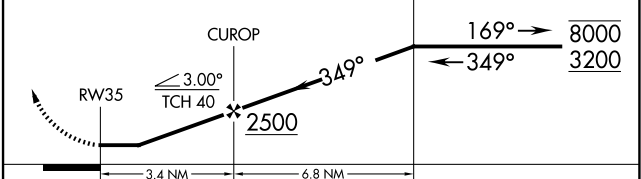
AWOS-3 118.725	SAN ANTONIO APP CON 125.1 307.0	UNICOM 123.0 (CTAF)
--------------------------	---	-------------------------------



ELEV 1384	TDZE 1384
------------------	------------------



4100	JEGUM	MEDIN
↑	✧	△
	tr 273°	



CATEGORY	A	B	C	D
LP MDA	1840-1	456 (500-1)	NA	
LNAV MDA	1920-1	536 (600-1)	NA	

SC-3, 11 JUN 2026 to 09 JUL 2026

SC-3, 11 JUN 2026 to 09 JUL 2026