

(TJANO2.TJANO) 25219

AL-10309 (FAA)

BOERNE STAGE AIRFIELD (5C1)  
SAN ANTONIO, TEXAS

# TJANO TWO DEPARTURE (RNAV)

SAN ANTONIO DEP CON  
125.1 307.0

RNAV 1 - DME/DME IRU or GPS.

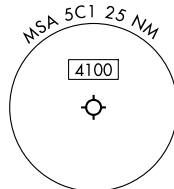
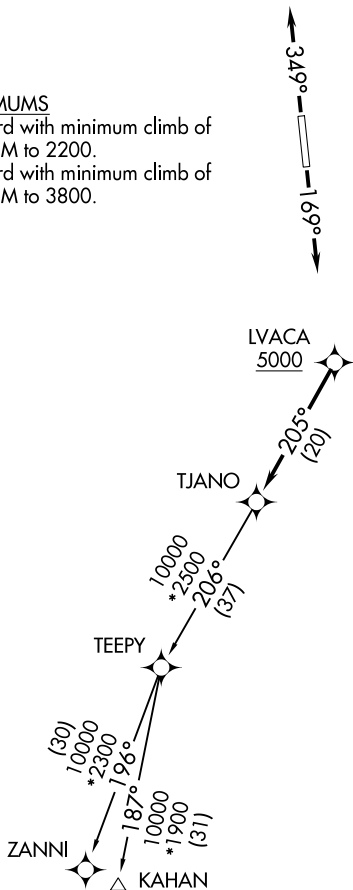
RADAR required for non-GPS equipped aircraft.  
RADAR required.

**TOP ALTITUDE:  
ASSIGNED BY ATC**

### TAKEOFF MINIMUMS

Rwy 17: Standard with minimum climb of  
210'/NM to 2200.

Rwy 35: Standard with minimum climb of  
250'/NM to 3800.



NOTE: Chart not to scale.

### DEPARTURE ROUTE DESCRIPTION

TAKEOFF RUNWAY 17: Climb on heading 169° or as assigned by ATC, for vectors to LVACA, thence. . .

TAKEOFF RUNWAY 35: Climb on heading 349° or as assigned by ATC, for vectors to LVACA, thence. . .

. . .on track 205° to TJANO, then on transition. Maintain ATC assigned altitude. Expect filed altitude 10 minutes after departure.

KAHAN TRANSITION (TJANO2.KAHAN)

ZANNI TRANSITION (TJANO2.ZANNI)

# TJANO TWO DEPARTURE (RNAV)

(TJANO2.TJANO) 07AUG25

SAN ANTONIO, TEXAS  
BOERNE STAGE AIRFIELD (5C1)

SC-3, 11 JUN 2026 to 09 JUL 2026

SC-3, 11 JUN 2026 to 09 JUL 2026