

WAAS CH <b>93902</b> <b>W13A</b>	APP CRS <b>126°</b>	Rwy Ldg TDZE <b>1124</b> Apt Elev <b>1126</b>	<b>5500</b>
--	------------------------	---	-------------

# RNAV (GPS) RWY 13

WILLMAR MUNI/JOHN L RICE FLD (BDH)

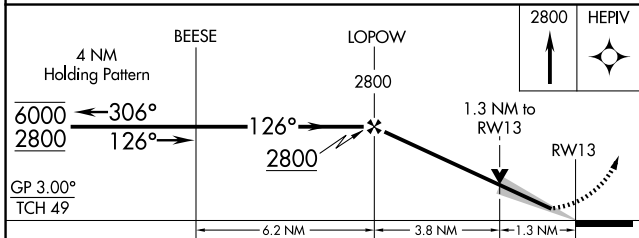
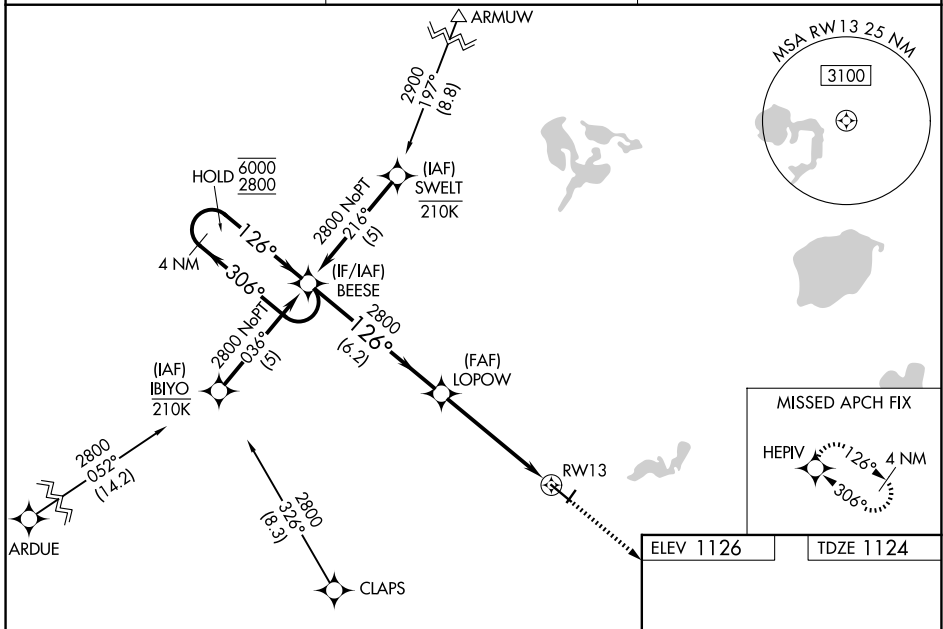
RNP APCH - GPS.

**⚠** For uncompensated Baro-VNAV systems, LNAV/VNAV NA below -17°C or above 54°C. Circling NA to Rwy's 3 and 21. Inop table does not apply to LPV. For inop ALS, increase LNAV/VNAV all Cats visibility to 1½ SM, LNAV Cats A and B to 1 SM and LNAV Cats C and D visibility to 1¾ SM. When local altimeter setting not received, use Olivia altimeter setting: increase LPV DA to 1379 feet; increase LNAV/VNAV DA to 1584 feet and all visibilities ½ SM; increase all MDAs 60 feet and Circling visibility Cat D ½ SM. Baro-VNAV and VDP NA when using Olivia Rgnl altimeter setting.

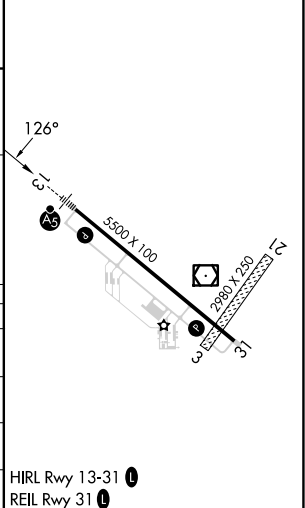
MALSR

MISSED APPROACH:  
Climb to 2800 direct HEPiV and hold.

AWOS-3PT <b>118.75</b>	MINNEAPOLIS CENTER <b>125.5 323.1</b>	UNICOM <b>122.8 (CTAF) 0</b>
---------------------------	--	---------------------------------



ELEV 1126	TDZE 1124
-----------	-----------



CATEGORY	A	B	C	D
LPV DA		1324-¾	200 (200-¾)	
LNAV/VNAV DA		1529-¾	405 (500-¾)	
LNAV MDA	1600-¾	476 (500-¾)	1600-1	476 (500-1)
CIRCLING	1600-1	474 (500-1)	1660-1½	1960-2¾

NC-1, 11 JUN 2026 to 09 JUL 2026

NC-1, 11 JUN 2026 to 09 JUL 2026