

| | | | |
|--|------------------------|-----------------------------|---|
| WAAS CH 72632 W31A | APP CRS 306° | Rwy Ldg TDZE Apt Elev | 5500 1126 1126 |
|--|------------------------|-----------------------------|---|

RNAV (GPS) RWY 31

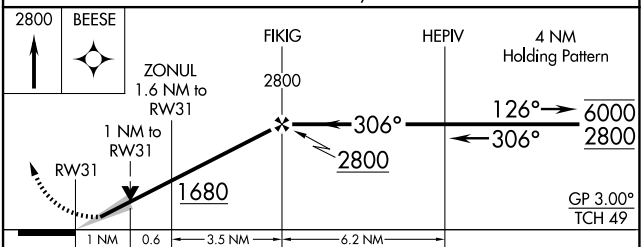
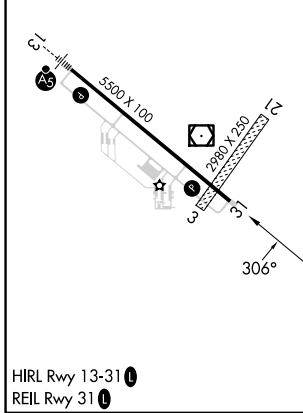
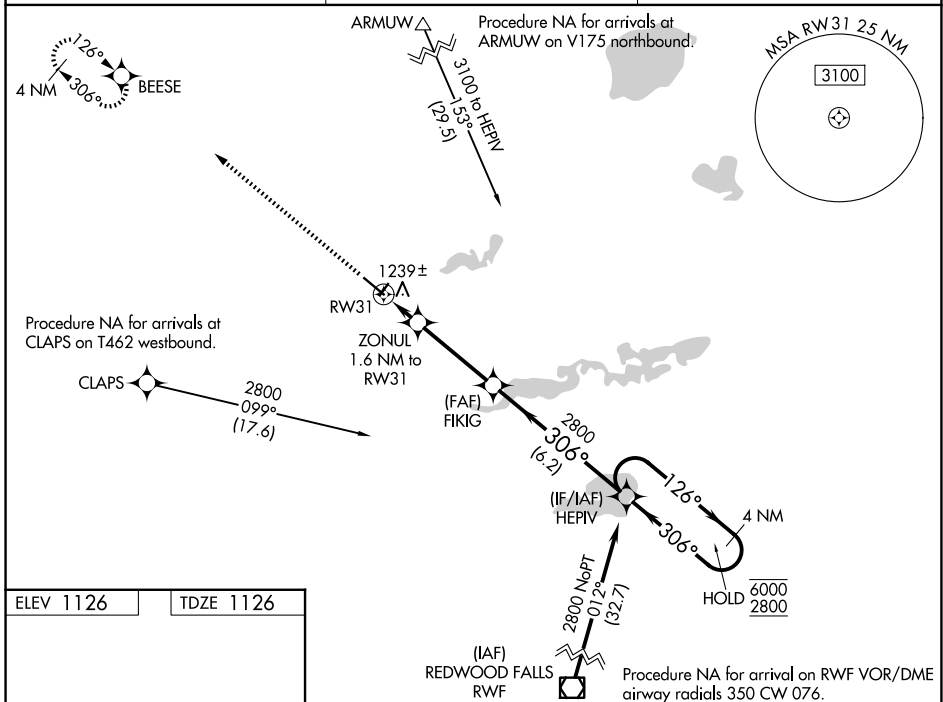
WILLMAR MUNI/JOHN L RICE FLD (BDH)

RNP APCH - GPS.

⚠ For uncompensated Baro-VNAV systems, LNAV/VNAV NA below -17°C or above 54°C. When local altimeter setting not received, use Olivia altimeter setting; increase LPV DA to 1381 feet; increase LNAV/VNAV DA to 1475 feet and all visibilities 1/8 SM; increase all MDAs 60 feet and LNAV visibility Cat C and D 1/4 SM. Baro-VNAV and VDP NA when using Olivia Rgnl altimeter setting.

MISSED APPROACH: Climb to 2800 direct BEESE and hold.

| | | |
|---------------------------|--|-------------------------------|
| AWOS-3PT 118.75 | MINNEAPOLIS CENTER 125.5 323.1 | UNICOM 122.8 (CTAF) |
|---------------------------|--|-------------------------------|



| CATEGORY | A | B | C | D |
|--------------|---|----------|---------------|---|
| LPV DA | | 1326-3/4 | 200 (200-3/4) | |
| LNAV/VNAV DA | | 1420-3/4 | 294 (300-3/4) | |
| LNAV MDA | | 1500-1 | 374 (400-1) | |

NC-1, 11 JUN 2026 to 09 JUL 2026

NC-1, 11 JUN 2026 to 09 JUL 2026