

BORRN SIX DEPARTURE (RNAV)

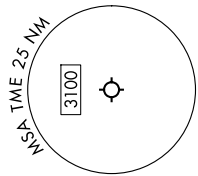
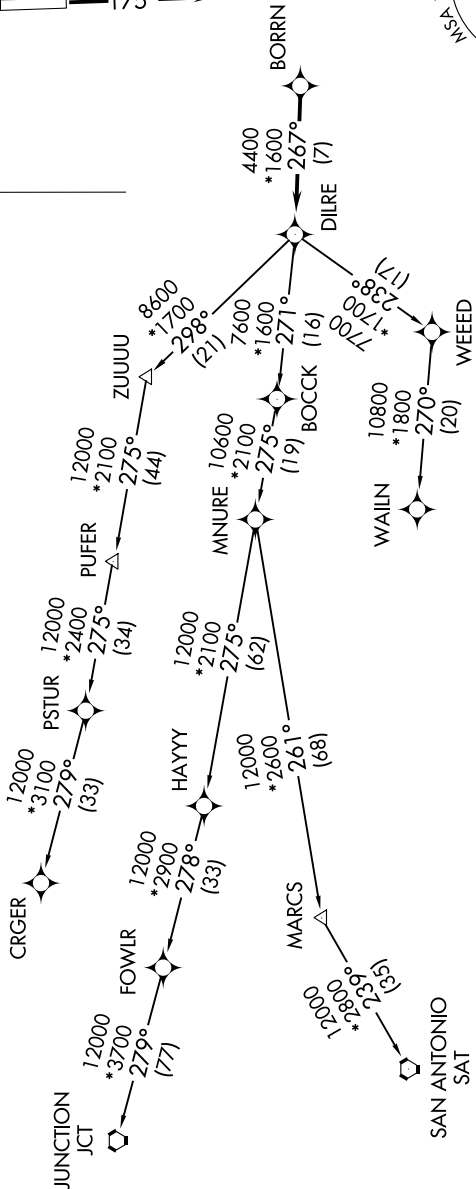
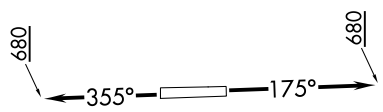
9202 UN 60 of 100 UN 11 '9-C-S

ATIS 119.525  
CTAF 126.975  
CLNC DEL 132.075  
HOUSTON DEP CON 123.8 257.7

**TAKEOFF MINIMUMS**  
Rwy 18, 36: Standard with minimum climb of 500'/NM to 680.

RNAV 1 - DME/DME/IRU or GPS.  
RADAR required.

**TOP ALTITUDE:  
ASSIGNED BY ATC**



NOTE: Chart not to scale.

NOTE: CRGR-TRANSITION ATC assigned only for aircraft departing 54T, AXH, EFD, GLS, HPY, IWS, LBX, LVJ, SGR, TME, T00, T41.

(CONTINUED ON FOLLOWING PAGE)

BORRN SIX DEPARTURE (RNAV)