

# LUFKIN FOUR DEPARTURE

HOUSTON DEP CON  
 123.8 257.7  
 ATIS  
 119.525  
 CLNC DEL  
 132.075  
 GND CON  
 132.075  
 EXECUTIVE TOWER ★  
 126.975 (CTAF)

**TOP ALTITUDE:  
 ASSIGNED BY ATC**

LITTLE ROCK  
 115.1 LIT  
 Chan 98

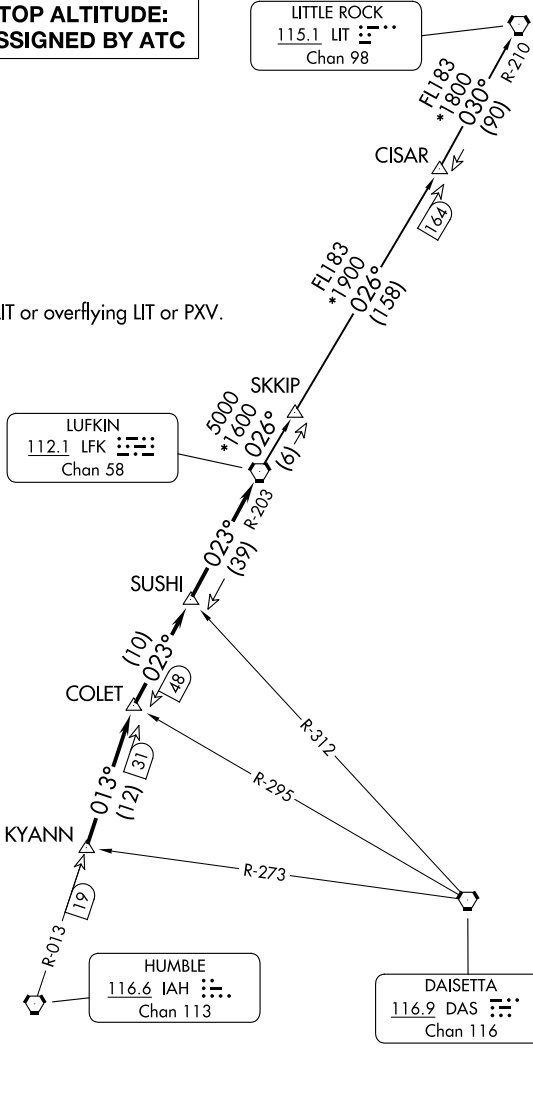
RADAR and DME required.

NOTE: For aircraft destined LIT or overflying LIT or PXV.

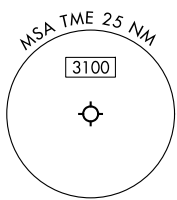
LUFKIN  
 112.1 LFK  
 Chan 58

HUMBLE  
 116.6 IAH  
 Chan 113

DAISETTA  
 116.9 DAS  
 Chan 116



TAKEOFF MINIMUMS  
 Rwy 18, 36: Standard.



NOTE: Chart not to scale.

(CONTINUED ON FOLLOWING PAGE)

SC-5, 11 JUN 2026 to 09 JUL 2026

SC-5, 11 JUN 2026 to 09 JUL 2026

# LUFKIN FOUR DEPARTURE