

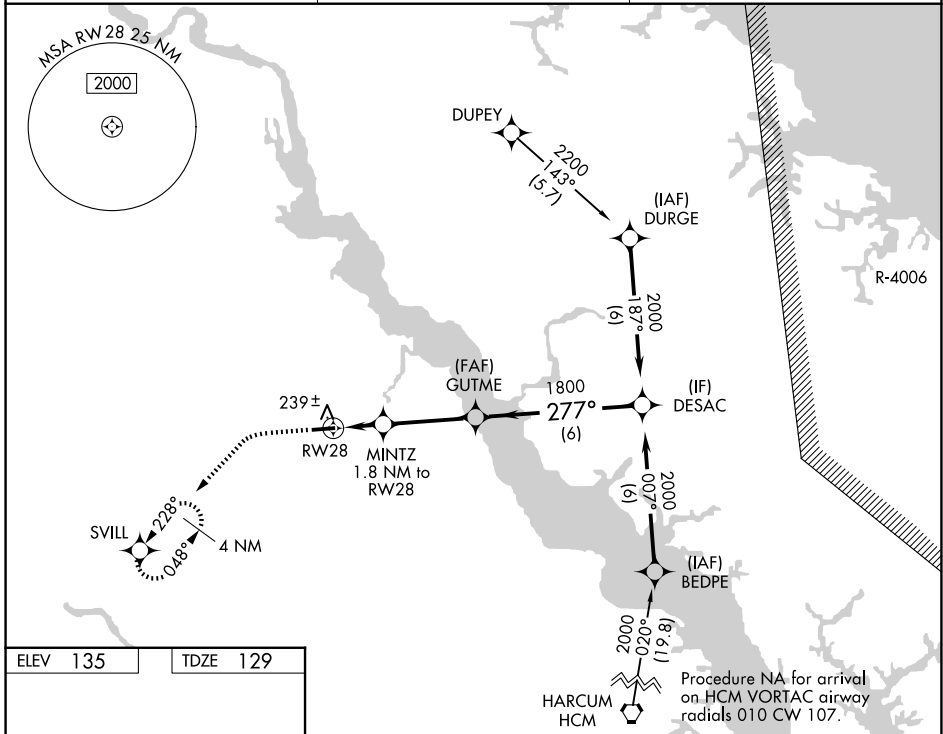
WAAS CH 99409 W28A	APP CRS 277°	Rwy Ldg 4300
	TDZE 129	
	Apt Elev 135	

RNAV (GPS) RWY 28

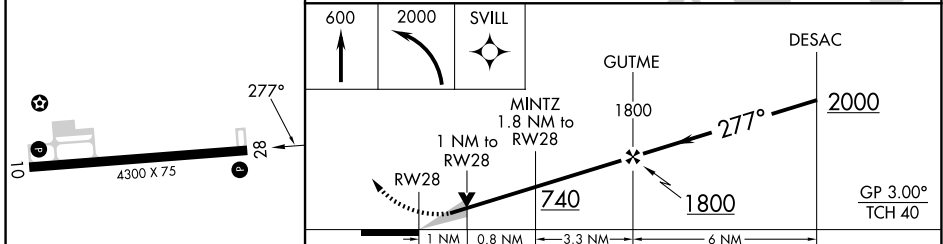
TAPPAHANNOCK/ESSEX COUNTY (XSA)

RNP APCH - GPS	MISSED APPROACH: Climb to 600 then climbing left turn to 2000 direct SVILL and hold.
<p>▼ For uncompensated Baro-VNAV systems, LNAV/VNAV NA below -15°C or above 54°C.</p> <p>▲</p>	

AWOS-3 125.775	POTOMAC APP CON 126.4 282.375	UNICOM 122.8 (CTAF) 0
--------------------------	---	---------------------------------



ELEV 135	TDZE 129
----------	----------



CATEGORY	A	B	C	D
LPV DA	379-1	250 (300-1)		NA
LNAV/VNAV DA	402-1	273 (300-1)		NA
LNAV MDA	500-1	371 (400-1)		NA
CIRCLING	580-1 445 (500-1)	640-1 505 (600-1)	820-2 685 (700-2)	NA

REIL Rwy 10 and 28
MIRL Rwy 10-28 0

NE-3, 11 JUN 2026 to 09 JUL 2026

NE-3, 11 JUN 2026 to 09 JUL 2026