

WAAS CH 58209 W02A	APP CRS 019°	Rwy Ldg 5002 TDZE 389 Apt Elev 389
--	------------------------	---

RNAV (GPS) RWY 2

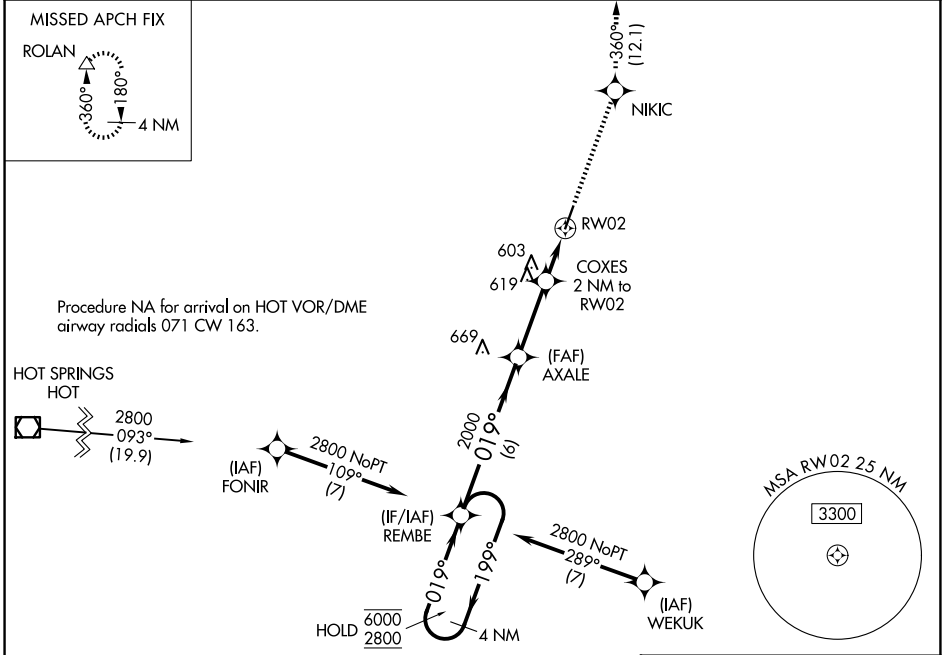
SALINE COUNTY RGNL (SUZ)

RNP APCH - GPS.

▼ Rwy 2 helicopter visibility reduction below 3/4 SM NA.
▲ For uncompensated Baro-VNAV systems, LNAV/VNAV NA below -15°C or above 54°C.

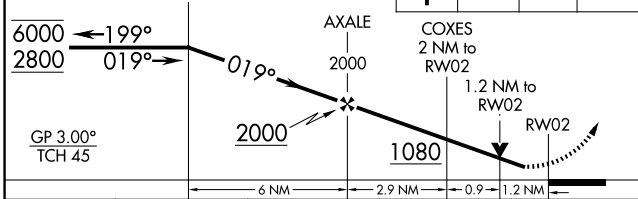
MISSED APPROACH: Climb to 3500 direct NIKIC and track 360° to ROLAN and hold.

AWOS-3 132.125	LITTLE ROCK APP CON 119.5 306.2	UNICOM 122.8 (CTAF) 0
--------------------------	---	---------------------------------

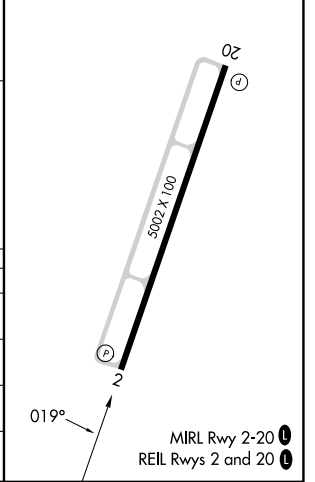


ELEV 389	TDZE 389
----------	----------

VGSI and RNAV glidepath not coincident (VGSI Angle 3.00/TCH 56).
 4 NM Holding Pattern REMBE



CATEGORY	A	B	C	D
LPV DA		639-3/4	250 (300-3/4)	
LNAV/VNAV DA		680-7/8	291 (300-7/8)	
LNAV MDA	820-1	431 (500-1)	820-1 1/4	431 (500-1 1/4)
CIRCLING	980-1 591 (600-1)	1080-1 691 (700-1)	1200-2 1/2 811 (900-2 1/2)	1200-2 3/4 811 (900-2 3/4)



SC-1, 11 JUN 2026 to 09 JUL 2026

SC-1, 11 JUN 2026 to 09 JUL 2026