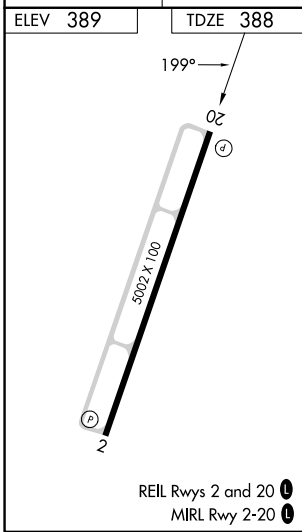
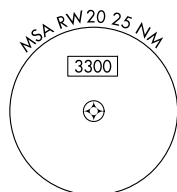
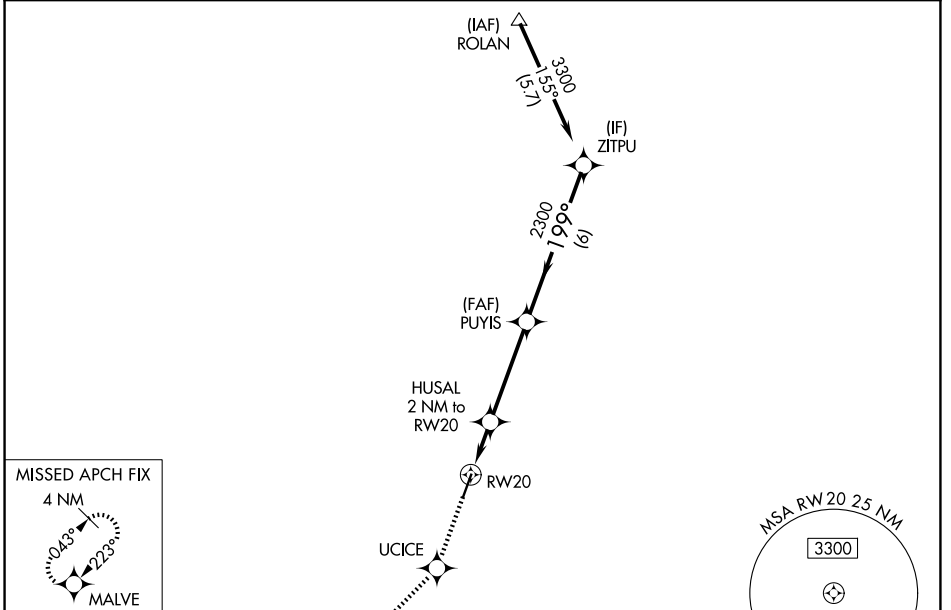


WAAS CH <b>40309</b> <b>W20A</b>	APP CRS <b>199°</b>	Rwy Ldg <b>5002</b> TDZE <b>388</b> Apt Elev <b>389</b>
----------------------------------------	------------------------	---------------------------------------------------------------

# RNAV (GPS) RWY 20

SALINE COUNTY RGNL (SUZ)

RNP APCH - GPS.		MISSED APPROACH: Climb to 2100 direct UCICE and on track 224° to MALVE and hold.
<p><b>⚠</b> Rwy 20 helicopter visibility reduction below ¾ SM NA. For uncompensated Baro-VNAV systems, LNAV/VNAV NA below -15°C and above 54°C.</p>		
AWOS-3 <b>132.125</b>	LITTLE ROCK APP CON <b>119.5 306.2</b>	UNICOM <b>122.8 (CTAF) 0</b>



ELEV 389	TDZE 388	2100 UCICE ↑		MALVE tr 224°		ZITPU 3300
						GP 3.00° TCH 60
CATEGORY	A	B	C	D		
LPV DA		642-¾	254 (300-¾)			
LNAV/VNAV DA		850-1⅜	462 (500-1⅜)			
LNAV MDA	900-1	512 (600-1)	900-1⅜	512 (600-1⅜)		
CIRCLING	980-1 591 (600-1)	1080-1 691 (700-1)	1200-2½ 811 (900-2½)	1200-2¾ 811 (900-2¾)		

REIL Rwy 2 and 20 **0**  
MIRL Rwy 2-20 **0**

SC-1, 11 JUN 2026 to 09 JUL 2026

SC-1, 11 JUN 2026 to 09 JUL 2026