

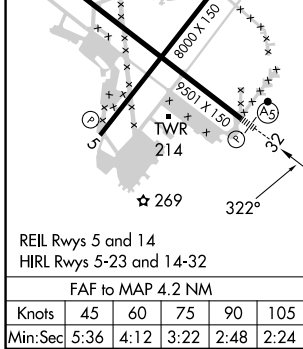
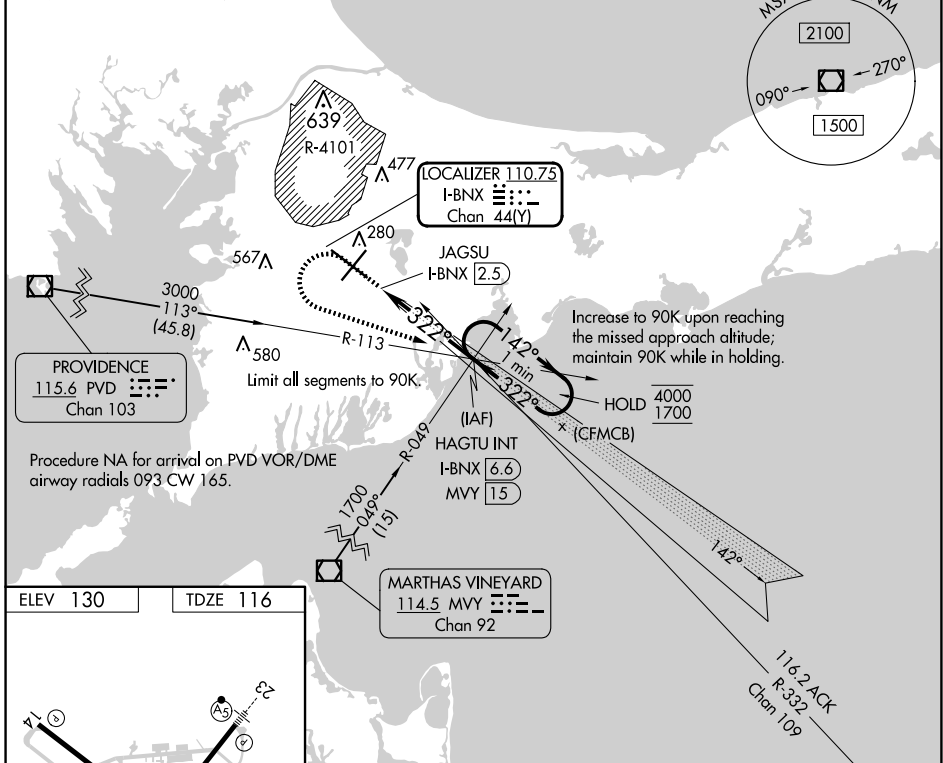
| | | | |
|---|------------------------|---|-------------|
| LOC/DME I-BNX 110.75 Chan 44(Y) | APP CRS 322° | Rwy Idg TDZE 116 Apt Elev 130 | 9501 |
|---|------------------------|---|-------------|

COPTER ILS Y or LOC Y RWY 32

CAPE COD COAST GUARD AIR STATION (F'MH)

| | | |
|--|--|--|
| <p>NA U.S. Coast Guard use only. For inop ALS, increase visibility to RVR 2400.</p> | <p>MALS R</p> | <p>MISSED APPROACH: Climb to 1400 then climbing left turn to 2000 on heading 123° and I-BNX localizer SE course to HAGTU INT/I-BNX 6.6 DME and hold.</p> |
| | <p>ATIS 120.475 236.825 BOSTON APP CON 118.2 284.6 COAST GUARD TOWER 128.425 291.1 GND CON 124.15 275.8</p> | |

NOT FOR CIVIL USE



| | | | | | | | |
|--|----------|------------------------|--|--|------------------|-----------------------------------|-----------------------------------|
| ELEV 130 | TDZE 116 | <p>1400 ↑ hdg 123°</p> | | <p>I-BNX SE crs</p> | <p>HAGTU INT</p> | <p>HAGTU INT I-BNX 6.6 MVY 15</p> | <p>One Minute Holding Pattern</p> |
| <p>Use I-BNX DME when on the localizer course.</p> | | | | | | | |
| <p>JAGSU I-BNX 2.5</p> | | | | <p>HAGTU INT I-BNX 6.6 MVY 15</p> | | | |
| <p>0.7 NM</p> | | <p>4.2 NM</p> | | <p>1700 142° 4000 1700 322° 1700 GS 3.00° TCH 50</p> | | | |
| <p>CATEGORY</p> | | | | <p>COPTER</p> | | | |
| <p>H-ILS 32</p> | | <p>216/12</p> | | <p>100 (100-¼)</p> | | | |
| <p>H-LOC 32</p> | | <p>520/12</p> | | <p>404 (400-¼)</p> | | | |

NE-1, 11 JUN 2026 to 09 JUL 2026

NE-1, 11 JUN 2026 to 09 JUL 2026