

WAAS CH 86736 W14A	APP CRS 142°	Rwy Idg TDZE Apt Elev	9501 130 130
--	------------------------	-----------------------------	---

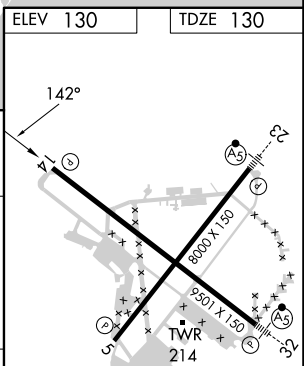
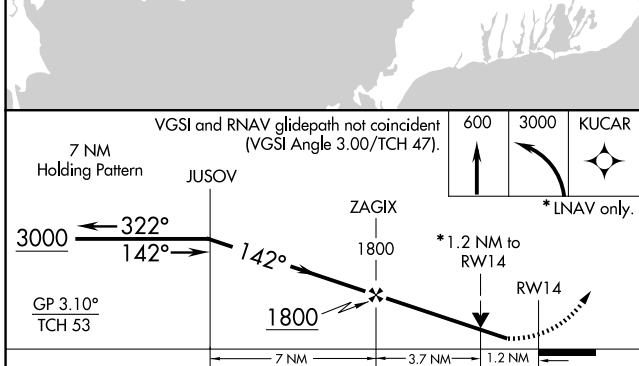
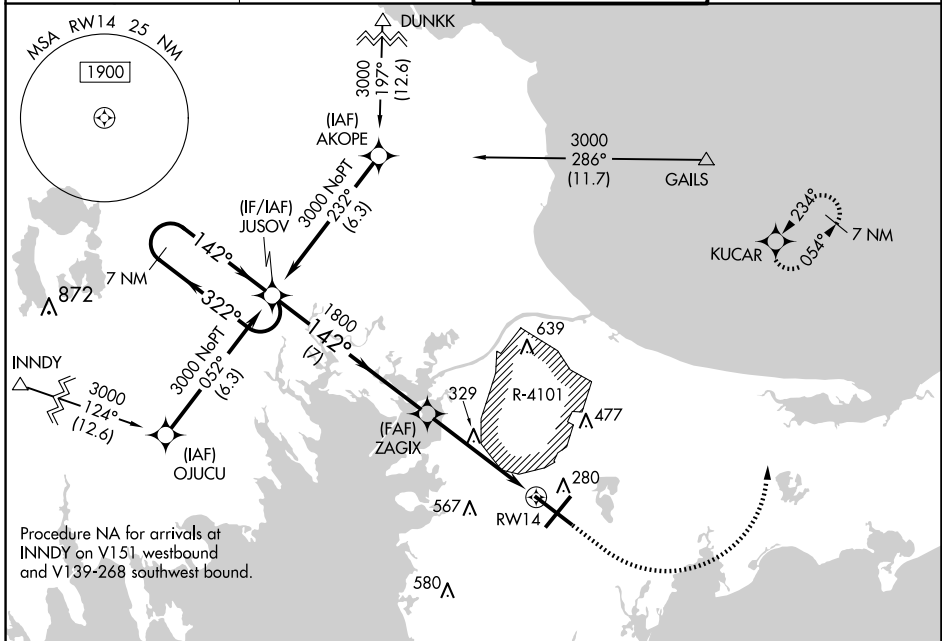
RNAV (GPS) RWY 14

CAPE COD COAST GUARD AIR STATION (FMH)

⚠ For uncompensated Baro-VNAV systems, LNAV/VNAV NA below -15°C (5°F) or above 54°C (130°F). DME/DME RNP-0.3 NA. Circling NA NE of Rwy 14 and NW of Rwy 23. Helicopter visibility reduction below ¾ SM NA.

MISSED APPROACH: Climb to 600 then climbing left turn to 3000 direct KUCAR and hold.

ATIS 120.475 236.825	BOSTON APP CON 118.2 284.6	COAST GUARD TOWER 128.425 291.1	GND CON 124.15 275.8
--------------------------------	--------------------------------------	---	--------------------------------



CATEGORY	A	B	C	D
LPV DA		330-¾	200 (200-¾)	
LNAV/VNAV DA		563-1⅓	433 (500-1⅓)	
LNAV MDA	580-1	450 (500-1)	580-1⅓	450 (500-1⅓)
CIRCLING	580-1 450 (500-1)	640-1 510 (600-1)	900-2¼ 770 (800-2¼)	900-2½ 770 (800-2½)

REIL Rwy 5 and 14
HIRL Rwy 5-23 and 14-32

NE-1, 11 JUN 2026 to 09 JUL 2026

NE-1, 11 JUN 2026 to 09 JUL 2026