

WAAS CH <b>81837</b> <b>W05A</b>	APP CRS <b>054°</b>	Rwy ldg TDZE Apt Elev	<b>8000</b> <b>117</b> <b>130</b>
--	------------------------	-----------------------------	---

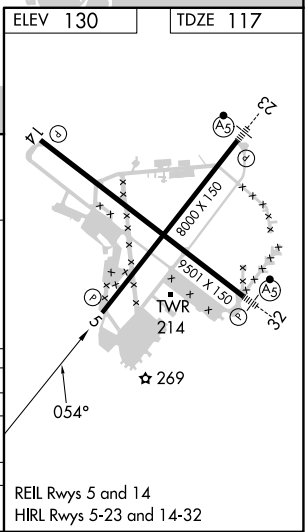
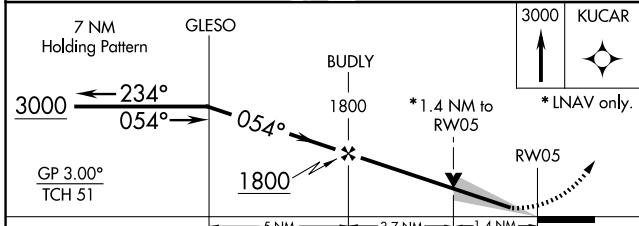
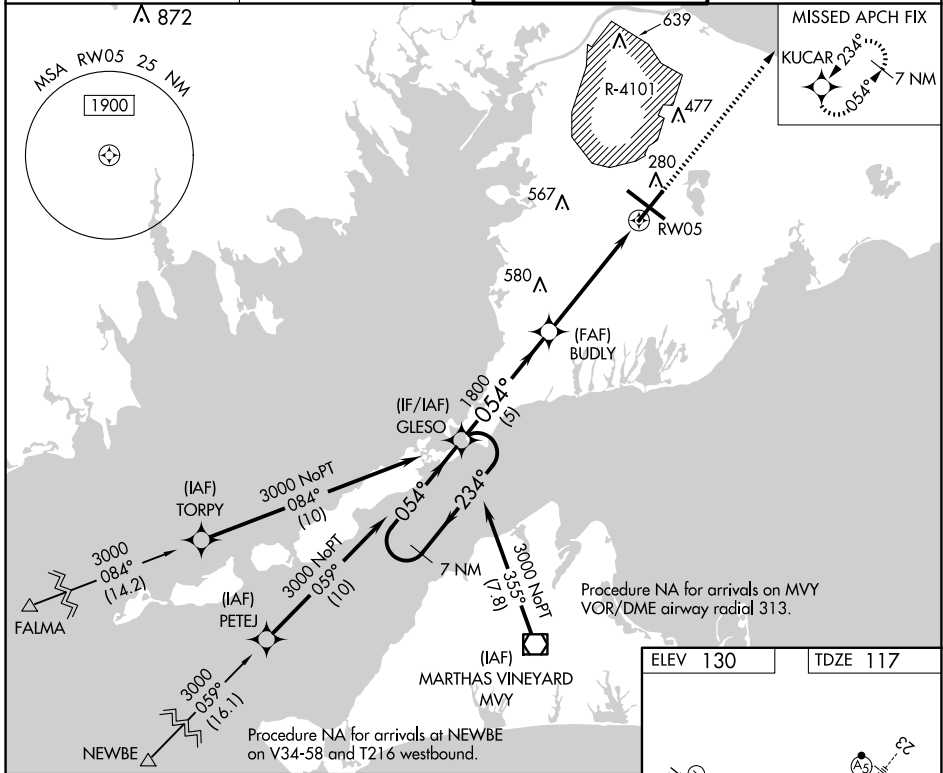
# RNAV (GPS) RWY 5

CAPE COD COAST GUARD AIR STATION (F/MH)

**⚠** For uncompensated Baro-VNAV systems, LNAV/VNAV NA below -15°C (5°F) or above 54°C (130°F). DME/DME RNP-0.3 NA. Circling NA NE of Rwy 14 and NW of Rwy 23.

**⚠** MISSED APPROACH: Climb to 3000 direct KUCAR and hold.

ATIS <b>120.475 236.825</b>	BOSTON APP CON <b>118.2 284.6</b>	COAST GUARD TOWER <b>128.425 291.1</b>	GND CON <b>124.15 275.8</b>
--------------------------------	--------------------------------------	---	--------------------------------



CATEGORY	A	B	C	D
LPV DA		317-3/4	200 (200-3/4)	
LNAV/DA VNAV		456-1 1/8	339 (400-1 1/8)	
LNAV MDA	540-1	423 (500-1)	540-1 1/4	423 (500-1 1/4)
<b>CIRCLING</b>	580-1 450 (500-1)	640-1 510 (600-1)	900-2 1/4 770 (800-2 1/4)	900-2 1/2 770 (800-2 1/2)

NE-1, 11 JUN 2026 to 09 JUL 2026

NE-1, 11 JUN 2026 to 09 JUL 2026