

WAAS CH 61324 W23A	APP CRS 226°	Rwy Ldg TDZE Apt Elev	5002 411 411
--	------------------------	-----------------------------	---

RNAV (GPS) RWY 23

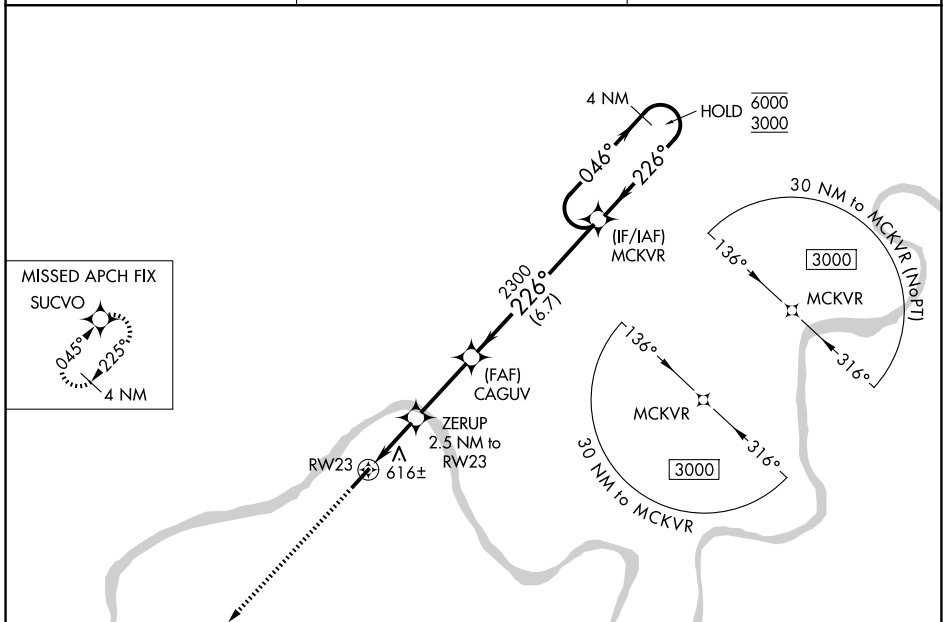
HANCOCK COUNTY/RON LEWIS FLD (KY8)

RNP APCH - GPS.

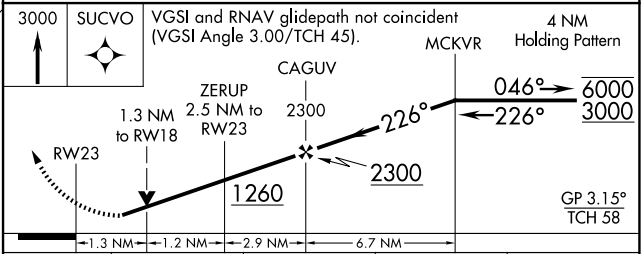
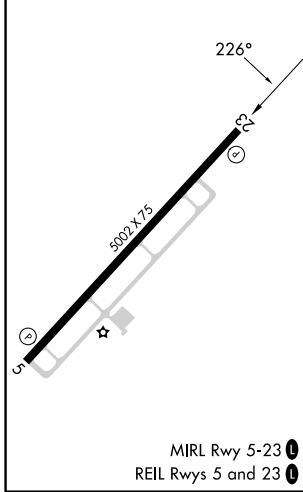
⚠ Rwy 23 helicopter visibility reduction below 3/4 SM NA. For uncompensated Baro-VNAV systems, LNAV/VNAV NA below -15°C or above 54°C.

⚠ MISSED APPROACH: Climb to 3000 direct SUCVO and hold.

AWOS-3 119.775	EVANSVILLE APP CON ★ 124.025 290.9	UNICOM 123.0 (CTAF) 0
--------------------------	--	---------------------------------



ELEV 411	TDZE 411
----------	----------



CATEGORY	A	B	C	D
LPV DA	834-1 1/4	423 (500-1 1/4)		NA
LNAV/VNAV DA	880-1 3/8	469 (500-1 3/8)		NA
LNAV MDA	880-1	469 (500-1)	880-1 3/8 469 (500-1 3/8)	NA
CIRCLING	960-1 549 (600-1)	1080-1 669 (700-1)	1160-2 1/4 749 (800-2 1/4)	NA

SE-1, 11 JUN 2026 to 09 JUL 2026

SE-1, 11 JUN 2026 to 09 JUL 2026